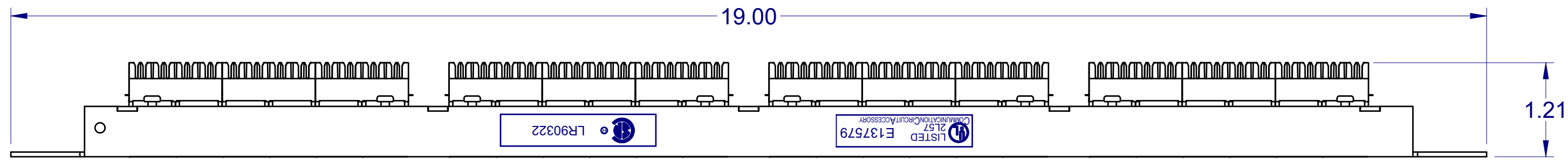
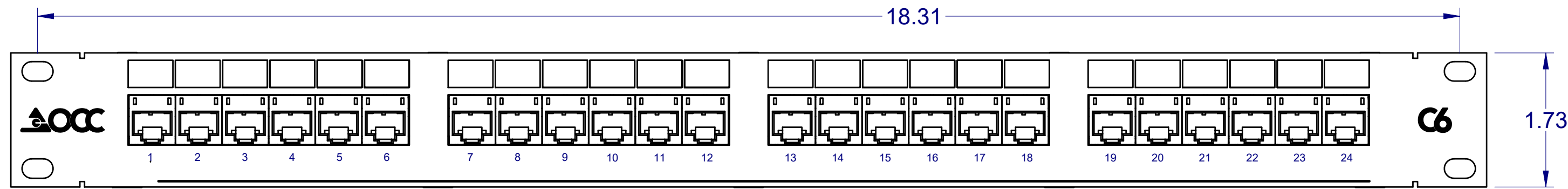


"OPTICAL CABLE CORPORATION (OCC)  
RESERVES THE RIGHT TO REVISE ANY  
AND ALL DESIGN SPECIFICATIONS."

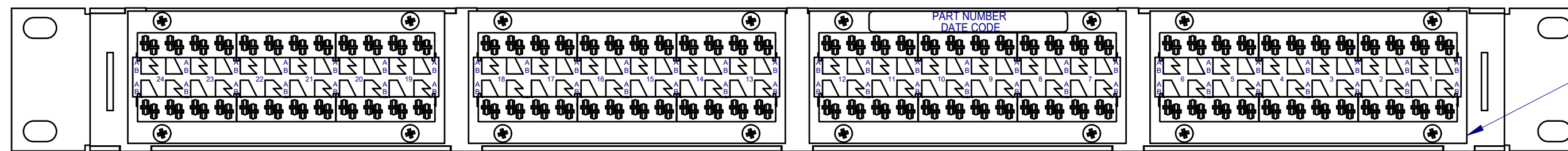
**UNCONTROLLED COPY**



TOP VIEW



FRONT VIEW (24 PORT)



BACK VIEW (ROTATED 180° DEGREES)

CAT 6 JACK MODULE  
(4 PLACES)

**APPLICATIONS:**

- ANALOG VOICE / VOIP / IPTV
- 10 / 100 / 1000 BASE-T ETHERNET
- IEEE 802.3 AF / AT PoE

**SPECIFICATIONS:**

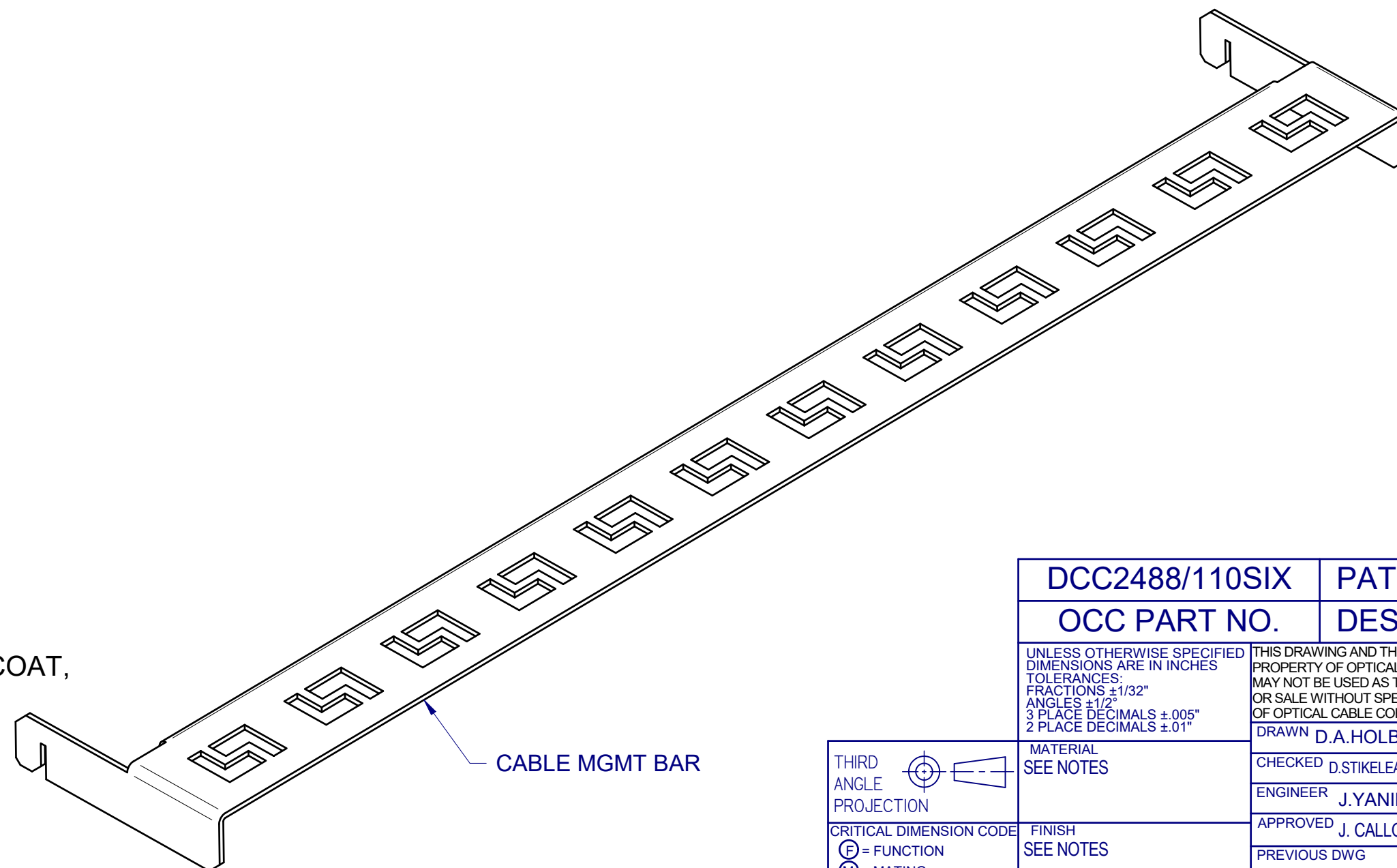
- ANSI / TIA-568.2 CATEGORY 6
- ANSI / TIA-968-A
- IEC 60603-7

**MATERIALS:**

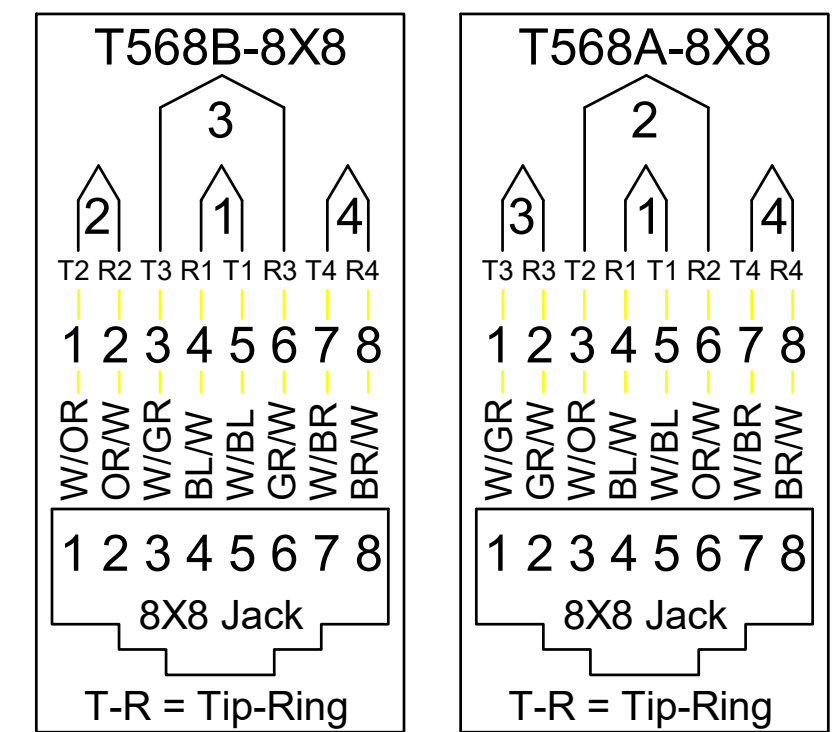
- PANEL: BLACK POWDER COAT, 16 AWG STEEL
- CABLE MANAGEMENT BARS, BLACK POWDER COAT, 16 AWG STEEL

**- KIT INCLUDES THE FOLLOWING:**

- (6) 3.6 " NYLON CABLE TIES
- (4) BLACK 12-24 PAN HEAD SCREWS
- (1) CABLE MANAGEMENT BAR

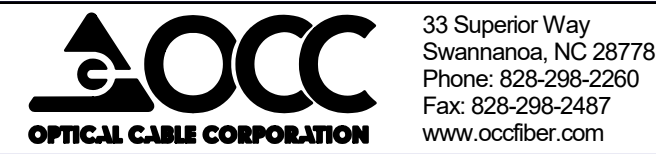


**8 POSITION MODULAR JACK**



DCC2488/110SIX	PATCH PANEL, 24 PORT, Cat6, 6PK MOD, OCC
OCC PART NO.	DESCRIPTION

UNLESS OTHERWISE SPECIFIED DIMENSIONS ARE IN INCHES TOLERANCES: FRACTIONS ±1/32" ANGLES ±1/2° 3 PLACE DECIMALS ±.005" 2 PLACE DECIMALS ±.01"		THIS DRAWING AND THE DESIGN SHOWN ARE THE PROPERTY OF OPTICAL CABLE CORPORATION AND MAY NOT BE USED AS THE BASIS FOR MANUFACTURE OR SALE WITHOUT SPECIFIC WRITTEN PERMISSION OF OPTICAL CABLE CORPORATION.	
MATERIAL SEE NOTES	FINISH SEE NOTES	DRAWN D.A.HOLBERT	DATE 6/21/01
THIRD ANGLE PROJECTION		CHECKED D.STIKELEATHER	DATE 5/18/04
CRITICAL DIMENSION CODE		ENGINEER J.YANIK	DATE 6/21/01
(F) = FUNCTION		APPROVED J.CALLOWAY	DATE 9/4/20
(M) = MATING		PREVIOUS DWG	
(A) = AUDIT		NEXT DWG	
		FILENAME C104760L.dft	SCALE: NONE
		SHEET 1 OF 1	



DWG TITLE: CUSTOMER DRAWING, OCC, PATCH PANEL, 24 PORT, Cat6  
 SIZE: C DWG NO.: C104760 REV: L  
 PROPRIETARY AND CONFIDENTIAL