

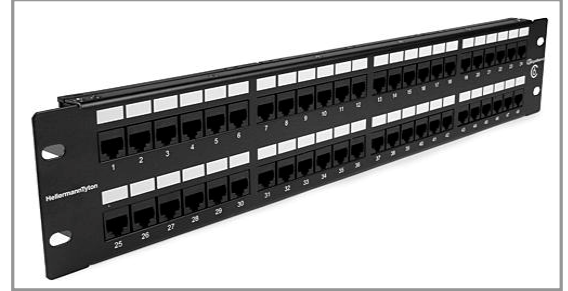


# HellermannTyton

## PP110C5E48

CAT 5e universal 48 port patch panel

Article Number: 853-20078  
Part Number: PP110C5E48  
Type: PP110C5E48



**Part No.** PP110C5E48  
**Type** PP110C5E48  
**Color** Black

**Features**

Category 5e Universal Patch Panels HellermannTyton's Category 5e Universal patch panels are pre-configured in 12, 24 and 48 port versions to meet the needs of nearly all customer applications. The panels are offered with increments of 6 port modules – which can be replaced if damaged during installation.

Category 5e Universal Patch Panels

- 6 port modules can be replaced easily if damaged during installation
- Front face provides an attractive, flush appearance
- Write-on labels provided for easy identification
- Self-adhesive labels are available for use with HellermannTyton TagPrint Pro software\*
- Universal panels are pre-assembled with T568B wiring; however, they can be used for both T568A and T568B wiring configurations, thus eliminating the need for extra inventory
- HellermannTyton offers a very simple, easy-to-install rear cable manager which is recommended for all Category 5e installations
- Sturdy and smooth rolled edges
- Clear plastic channel protects PCB and allows easy viewing of wiring label

**Rack Units** 2