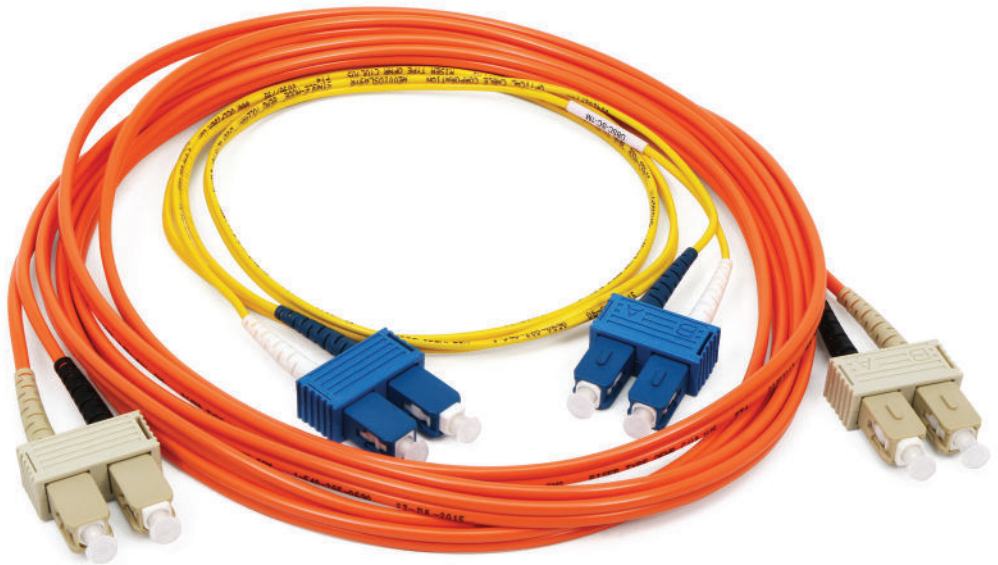




OCC's comprehensive line of fiber optic jumpers and pigtails are known throughout the industry for their reliability. In addition to offering any specified length, OCC offers a full suite of complementary products and can assist you in designing other assemblies including custom jackets and colors. OCC offers full end-to-end solutions for all of your cable and connectivity needs. Please call your OCC Sales Representative at 1-800-622-7711 to learn more. We are ready to assist you.



All of the products listed below are part of our Standard Length Stocking Program and available for same-day shipping if ordered by 12pm, EST. For larger orders, our sales representative can assist you with an estimated lead time.

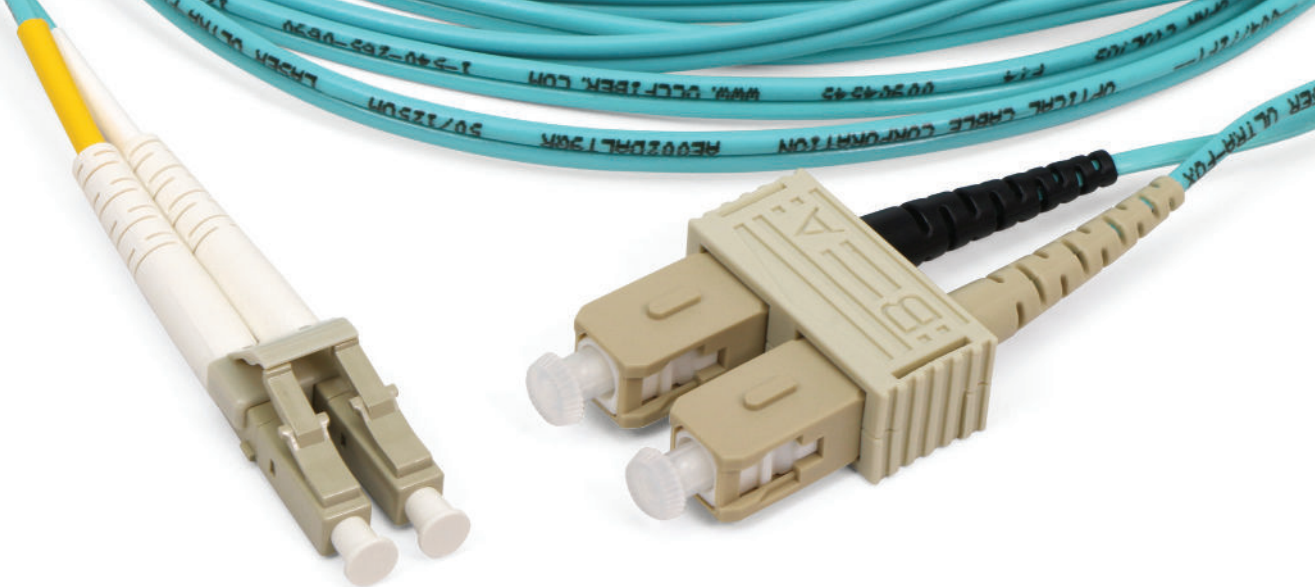
FIBER OPTIC JUMPERS

Get exactly the jumper you need to make the transition from cross-connect point to the electronics. With unmatched insertion loss and exceptional return loss, OCC's full line of fiber jumpers ensures the right connection every time. Available in simplex and duplex, multimode 50/125, OM3, OM4, 62.5/125, or single-mode in a variety of connector types and lengths. The discrete connectors utilize ceramic ferrules.

DUPLEX JUMPERS MM 62.5/125

| PART # | DESCRIPTION |
|--------------|---|
| LC-LC | |
| D6LC-LC-1M | F.O. JUMPER,62.5,LC-LC,1M,ORANGE,DUPLEX |
| D6LC-LC-2M | F.O. JUMPER,62.5,LC-LC,2M,ORANGE,DUPLEX |
| D6LC-LC-3M | F.O. JUMPER,62.5,LC-LC,3M,ORANGE,DUPLEX |
| D6LC-LC-4M | F.O. JUMPER,62.5,LC-LC,4M,ORANGE,DUPLEX |
| D6LC-LC-5M | F.O. JUMPER,62.5,LC-LC,5M,ORANGE,DUPLEX |
| LC-SC | |
| D6LC-SC-1M | F.O. JUMPER,62.5,LC-SC,1M,ORANGE,DUPLEX |
| D6LC-SC-2M | F.O. JUMPER,62.5,LC-SC,2M,ORANGE,DUPLEX |
| D6LC-SC-3M | F.O. JUMPER,62.5,LC-SC,3M,ORANGE,DUPLEX |
| D6LC-SC-5M | F.O. JUMPER,62.5,LC-SC,5M,ORANGE,DUPLEX |
| LC-ST | |
| D6LC-ST-1M | F.O. JUMPER,62.5,LC-ST,1M,ORANGE,DUPLEX |
| D6LC-ST-2M | F.O. JUMPER,62.5,LC-ST,2M,ORANGE,DUPLEX |
| D6LC-ST-3M | F.O. JUMPER,62.5,LC-ST,3M,ORANGE,DUPLEX |
| D6LC-ST-5M | F.O. JUMPER,62.5,LC-ST,5M,ORANGE,DUPLEX |

| PART # | DESCRIPTION |
|--------------|---|
| SC-SC | |
| D6SC-SC-1M | F.O. JUMPER,62.5,SC-SC,1M,ORANGE,DUPLEX |
| D6SC-SC-2M | F.O. JUMPER,62.5,SC-SC,2M,ORANGE,DUPLEX |
| D6SC-SC-3M | F.O. JUMPER,62.5,SC-SC,3M,ORANGE,DUPLEX |
| D6SC-SC-5M | F.O. JUMPER,62.5,SC-SC,5M,ORANGE,DUPLEX |
| SC-ST | |
| D6SC-ST-1M | F.O. JUMPER,62.5,SC-ST,1M,ORANGE,DUPLEX |
| D6SC-ST-2M | F.O. JUMPER,62.5,SC-ST,2M,ORANGE,DUPLEX |
| D6SC-ST-3M | F.O. JUMPER,62.5,SC-ST,3M,ORANGE,DUPLEX |
| D6SC-ST-5M | F.O. JUMPER,62.5,SC-ST,5M,ORANGE,DUPLEX |
| ST-ST | |
| D6ST-ST-1M | F.O. JUMPER,62.5,ST-ST,1M,ORANGE,DUPLEX |
| D6ST-ST-2M | F.O. JUMPER,62.5,ST-ST,2M,ORANGE,DUPLEX |
| D6ST-ST-3M | F.O. JUMPER,62.5,ST-ST,3M,ORANGE,DUPLEX |
| D6ST-ST-4M | F.O. JUMPER,62.5,ST-ST,4M,ORANGE,DUPLEX |
| D6ST-ST-5M | F.O. JUMPER,62.5,ST-ST,5M,ORANGE,DUPLEX |



FIBER OPTIC JUMPERS STOCK LIST

DUPLEX JUMPERS MM 50/125

| PART # | DESCRIPTION |
|--------------|--|
| LC-LC | |
| D5LC-LC-1M | F.O.JUMPER,50um,LC-LC,1M,ORANGE,DUPLEX |
| D5LC-LC-2M | F.O.JUMPER,50um,LC-LC,2M,ORANGE,DUPLEX |
| D5LC-LC-3M | F.O.JUMPER,50um,LC-LC,3M,ORANGE,DUPLEX |
| D5LC-LC-5M | F.O.JUMPER,50um,LC-LC,5M,ORANGE,DUPLEX |
| LC-SC | |
| D5LC-SC-1M | F.O.JUMPER,50um,LC-SC,1M,ORANGE,DUPLEX |
| D5LC-SC-2M | F.O.JUMPER,50um,LC-SC,2M,ORANGE,DUPLEX |
| D5LC-SC-3M | F.O.JUMPER,50um,LC-SC,3M,ORANGE,DUPLEX |
| D5LC-SC-5M | F.O.JUMPER,50um,LC-SC,5M,ORANGE,DUPLEX |
| LC-ST | |
| D5LC-ST-1M | F.O.JUMPER,50um,LC-ST,1M,ORANGE,DUPLEX |
| D5LC-ST-2M | F.O.JUMPER,50um,LC-ST,2M,ORANGE,DUPLEX |
| D5LC-ST-3M | F.O.JUMPER,50um,LC-ST,3M,ORANGE,DUPLEX |
| D5LC-ST-5M | F.O.JUMPER,50um,LC-ST,5M,ORANGE,DUPLEX |
| SC-SC | |
| D5SC-SC-1M | F.O.JUMPER,50um,SC-SC,1M,ORANGE,DUPLEX |
| D5SC-SC-2M | F.O.JUMPER,50um,SC-SC,2M,ORANGE,DUPLEX |
| D5SC-SC-3M | F.O.JUMPER,50um,SC-SC,3M,ORANGE,DUPLEX |
| D5SC-SC-5M | F.O.JUMPER,50um,SC-SC,5M,ORANGE,DUPLEX |
| SC-ST | |
| D5SC-ST-1M | F.O.JUMPER,50um,SC-ST,1M,ORANGE,DUPLEX |
| D5SC-ST-2M | F.O.JUMPER,50um,SC-ST,2M,ORANGE,DUPLEX |
| D5SC-ST-3M | F.O.JUMPER,50um,SC-ST,3M,ORANGE,DUPLEX |
| D5SC-ST-5M | F.O.JUMPER,50um,SC-ST,5M,ORANGE,DUPLEX |
| ST-ST | |
| D5ST-ST-1M | F.O.JUMPER,50um,ST-ST,1M,ORANGE,DUPLEX |
| D5ST-ST-2M | F.O.JUMPER,50um,ST-ST,2M,ORANGE,DUPLEX |
| D5ST-ST-3M | F.O.JUMPER,50um,ST-ST,3M,ORANGE,DUPLEX |
| D5ST-ST-5M | F.O.JUMPER,50um,ST-ST,5M,ORANGE,DUPLEX |

DUPLEX JUMPERS MM 50/125 OM3

| PART # | DESCRIPTION |
|--------------|---|
| LC-LC | |
| D5LC-LC-1MG | F.O.JUMPER,50umOM3,LC-LC,1M,AQUA,DUPLEX |
| D5LC-LC-2MG | F.O.JUMPER,50umOM3,LC-LC,2M,AQUA,DUPLEX |
| D5LC-LC-3MG | F.O.JUMPER,50umOM3,LC-LC,3M,AQUA,DUPLEX |
| D5LC-LC-5MG | F.O.JUMPER,50umOM3,LC-LC,5M,AQUA,DUPLEX |
| LC-SC | |
| D5LC-SC-1MG | F.O.JUMPER,50umOM3,LC-SC,1M,AQUA,DUPLEX |
| D5LC-SC-2MG | F.O.JUMPER,50umOM3,LC-SC,2M,AQUA,DUPLEX |
| D5LC-SC-3MG | F.O.JUMPER,50umOM3,LC-SC,3M,AQUA,DUPLEX |
| D5LC-SC-5MG | F.O.JUMPER,50umOM3,LC-SC,5M,AQUA,DUPLEX |
| SC-SC | |
| D5SC-SC-1MG | F.O.JUMPER,50umOM3,SC-SC,1M,AQUA,DUPLEX |
| D5SC-SC-2MG | F.O.JUMPER,50umOM3,SC-SC,2M,AQUA,DUPLEX |
| D5SC-SC-3MG | F.O.JUMPER,50umOM3,SC-SC,3M,AQUA,DUPLEX |
| D5SC-SC-5MG | F.O.JUMPER,50umOM3,SC-SC,5M,AQUA,DUPLEX |

DUPLEX JUMPERS MM 50/125 OM4

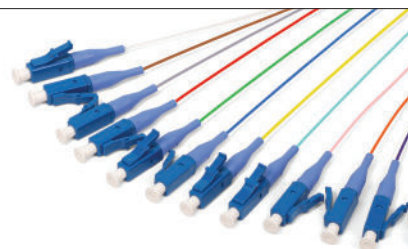
| PART # | DESCRIPTION |
|--------------|---|
| LC-LC | |
| D5LC-LC-1MQ | F.O.JUMPER,50umOM4,LC-LC,1M,AQUA,DUPLEX |
| D5LC-LC-2MQ | F.O.JUMPER,50umOM4,LC-LC,2M,AQUA,DUPLEX |
| D5LC-LC-3MQ | F.O.JUMPER,50umOM4,LC-LC,3M,AQUA,DUPLEX |
| D5LC-LC-5MQ | F.O.JUMPER,50umOM4,LC-LC,5M,AQUA,DUPLEX |
| SC-SC | |
| D5SC-SC-1MQ | F.O.JUMPER,50umOM4,SC-SC,1M,AQUA,DUPLEX |
| D5SC-SC-2MQ | F.O.JUMPER,50umOM4,SC-SC,2M,AQUA,DUPLEX |
| D5SC-SC-3MQ | F.O.JUMPER,50umOM4,SC-SC,3M,AQUA,DUPLEX |
| D5SC-SC-5MQ | F.O.JUMPER,50umOM4,SC-SC,5M,AQUA,DUPLEX |

DUPLEX JUMPERS SM 9/125

| PART # | DESCRIPTION |
|--------------|---------------------------------------|
| LC-LC | |
| D8LC-LC-1M | F.O.JUMPER,SM,LC-LC,1M,YELLOW,DUPLEX |
| D8LC-LC-2M | F.O.JUMPER,SM,LC-LC,2M,YELLOW,DUPLEX |
| D8LC-LC-3M | F.O.JUMPER,SM,LC-LC,3M,YELLOW,DUPLEX |
| D8LC-LC-5M | F.O.JUMPER,SM,LC-LC,5M,YELLOW,DUPLEX |
| D8LC-LC-10M | F.O.JUMPER,SM,LC-LC,10M,YELLOW,DUPLEX |
| D8LC-LC-15M | F.O.JUMPER,SM,LC-LC,15M,YELLOW,DUPLEX |
| LC-SC | |
| D8LC-SC-1M | F.O.JUMPER,SM,LC-SC,1M,YELLOW,DUPLEX |
| D8LC-SC-2M | F.O.JUMPER,SM,LC-SC,2M,YELLOW,DUPLEX |
| D8LC-SC-3M | F.O.JUMPER,SM,LC-SC,3M,YELLOW,DUPLEX |
| D8LC-SC-5M | F.O.JUMPER,SM,LC-SC,5M,YELLOW,DUPLEX |
| D8LC-SC-10M | F.O.JUMPER,SM,LC-SC,10M,YELLOW,DUPLEX |
| D8LC-SC-15M | F.O.JUMPER,SM,LC-SC,15M,YELLOW,DUPLEX |
| LC-ST | |
| D8LC-ST-1M | F.O.JUMPER,SM,LC-ST,1M,YELLOW,DUPLEX |
| D8LC-ST-2M | F.O.JUMPER,SM,LC-ST,2M,YELLOW,DUPLEX |
| D8LC-ST-3M | F.O.JUMPER,SM,LC-ST,3M,YELLOW,DUPLEX |
| D8LC-ST-5M | F.O.JUMPER,SM,LC-ST,5M,YELLOW,DUPLEX |
| D8LC-ST-10M | F.O.JUMPER,SM,LC-ST,10M,YELLOW,DUPLEX |
| SC-SC | |
| D8SC-SC-1M | F.O.JUMPER,SM,SC-SC,1M,YELLOW,DUPLEX |
| D8SC-SC-2M | F.O.JUMPER,SM,SC-SC,2M,YELLOW,DUPLEX |
| D8SC-SC-3M | F.O.JUMPER,SM,SC-SC,3M,YELLOW,DUPLEX |
| D8SC-SC-5M | F.O.JUMPER,SM,SC-SC,5M,YELLOW,DUPLEX |
| SC-ST | |
| D8SC-ST-1M | F.O.JUMPER,SM,SC-ST,1M,YELLOW,DUPLEX |
| D8SC-ST-2M | F.O.JUMPER,SM,SC-ST,2M,YELLOW,DUPLEX |
| D8SC-ST-3M | F.O.JUMPER,SM,SC-ST,3M,YELLOW,DUPLEX |
| D8SC-ST-5M | F.O.JUMPER,SM,SC-ST,5M,YELLOW,DUPLEX |
| D8SC-ST-10M | F.O.JUMPER,SM,SC-ST,10M,YELLOW,DUPLEX |
| ST-ST | |
| D8ST-ST-1M | F.O.JUMPER,SM,ST-ST,1M,YELLOW,DUPLEX |
| D8ST-ST-2M | F.O.JUMPER,SM,ST-ST,2M,YELLOW,DUPLEX |
| D8ST-ST-3M | F.O.JUMPER,SM,ST-ST,3M,YELLOW,DUPLEX |
| D8ST-ST-5M | F.O.JUMPER,SM,ST-ST,5M,YELLOW,DUPLEX |
| D8ST-ST-10M | F.O.JUMPER,SM,ST-ST,10M,YELLOW,DUPLEX |

SIMPLEX JUMPERS - SM 9/125 ONLY

| PART # | DESCRIPTION |
|--------------|--|
| LC-LC | |
| S8LC-LC-1M | F.O.JUMPER,SM,LC-LC,1M,YELLOW,SIMPLEX |
| S8LC-LC-2M | F.O.JUMPER,SM,LC-LC,2M,YELLOW,SIMPLEX |
| S8LC-LC-3M | F.O.JUMPER,SM,LC-LC,3M,YELLOW,SIMPLEX |
| S8LC-LC-5M | F.O.JUMPER,SM,LC-LC,5M,YELLOW,SIMPLEX |
| S8LC-LC-10M | F.O.JUMPER,SM,LC-LC,10M,YELLOW,SIMPLEX |
| LC-SC | |
| S8LC-SC-1M | F.O.JUMPER,SM,LC-SC,1M,YELLOW,SIMPLEX |
| S8LC-SC-2M | F.O.JUMPER,SM,LC-SC,2M,YELLOW,SIMPLEX |
| S8LC-SC-3M | F.O.JUMPER,SM,LC-SC,3M,YELLOW,SIMPLEX |
| S8LC-SC-5M | F.O.JUMPER,SM,LC-SC,5M,YELLOW,SIMPLEX |
| S8LC-SC-10M | F.O.JUMPER,SM,LC-SC,10M,YELLOW,SIMPLEX |
| LC-ST | |
| S8LC-ST-1M | F.O.JUMPER,SM,LC-ST,1M,YELLOW,SIMPLEX |
| S8LC-ST-2M | F.O.JUMPER,SM,LC-ST,2M,YELLOW,SIMPLEX |
| S8LC-ST-3M | F.O.JUMPER,SM,LC-ST,3M,YELLOW,SIMPLEX |
| SC-SC | |
| S8SC-SC-1M | F.O.JUMPER,SM,SC-SC,1M,YELLOW,SIMPLEX |
| S8SC-SC-2M | F.O.JUMPER,SM,SC-SC,2M,YELLOW,SIMPLEX |
| S8SC-SC-3M | F.O.JUMPER,SM,SC-SC,3M,YELLOW,SIMPLEX |
| S8SC-SC-5M | F.O.JUMPER,SM,SC-SC,5M,YELLOW,SIMPLEX |
| SC-ST | |
| S8SC-ST-1M | F.O.JUMPER,SM,SC-ST,1M,YELLOW,SIMPLEX |
| S8SC-ST-2M | F.O.JUMPER,SM,SC-ST,2M,YELLOW,SIMPLEX |
| S8SC-ST-3M | F.O.JUMPER,SM,SC-ST,3M,YELLOW,SIMPLEX |
| S8SC-ST-5M | F.O.JUMPER,SM,SC-ST,5M,YELLOW,SIMPLEX |
| S8SC-ST-10M | F.O.JUMPER,SM,SC-ST,10M,YELLOW,SIMPLEX |
| S8SC-ST-15M | F.O.JUMPER,SM,SC-ST,15M,YELLOW,SIMPLEX |
| ST-ST | |
| S8ST-ST-1M | F.O.JUMPER,SM,ST-ST,1M,YELLOW,SIMPLEX |
| S8ST-ST-2M | F.O.JUMPER,SM,ST-ST,2M,YELLOW,SIMPLEX |
| S8ST-ST-3M | F.O.JUMPER,SM,ST-ST,3M,YELLOW,SIMPLEX |
| S8ST-ST-5M | F.O.JUMPER,SM,ST-ST,5M,YELLOW,SIMPLEX |
| S8ST-ST-10M | F.O.JUMPER,SM,ST-ST,10M,YELLOW,SIMPLEX |



FIBER OPTIC PIGTAILS

OCC's fiber optic pigtail assemblies are designed for reliability and performance. They combine high-precision zirconia ferrules and rugged composite hardware to provide the optical performance, durability, and repeatability necessary for today's most challenging network applications. Color-coded 900 micron pigtails are available in 6- or 12-bundles and can be pre-terminated in any OCC rack-mount or wall-mount cabinet, or they can be customer configured for field installations.

FIBER OPTIC PIGTAILS



PIGTAIL BUNDLES 6 FIBER MM 62.5/125

| PART # | DESCRIPTION |
|-----------|----------------------------------|
| LC | |
| P6LC06-2M | PIGTAIL ASSY,62.5,LC,6F,2 METERS |
| P6LC06-3M | PIGTAIL ASSY,62.5,LC,6F,3 METERS |
| SC | |
| P6SC06-3M | PIGTAIL ASSY,62.5,SC,6F,3 METERS |
| ST | |
| P6ST06-1M | PIGTAIL ASSY,62.5,ST,6F,1 METER |
| P6ST06-3M | PIGTAIL ASSY,62.5,ST,6F,3 METER |

PIGTAIL BUNDLES 12 FIBER MM 62.5/125

| PART # | DESCRIPTION |
|-----------|----------------------------------|
| LC | |
| P6LC12-1M | PIGTAIL ASSY,62.5,LC,12F,1 METER |
| P6LC12-3M | PIGTAIL ASSY,62.5,LC,12F,3 METER |
| SC | |
| P6SC12-1M | PIGTAIL ASSY,62.5,SC,12F,1 METER |
| P6SC12-2M | PIGTAIL ASSY,62.5,SC,12F,2 METER |
| P6SC12-3M | PIGTAIL ASSY,62.5,SC,12F,3 METER |
| ST | |
| P6ST12-1M | PIGTAIL ASSY,62.5,ST,12F,1 METER |
| P6ST12-2M | PIGTAIL ASSY,62.5,ST,12F,2 METER |
| P6ST12-3M | PIGTAIL ASSY,62.5,ST,12F,3 METER |

PIGTAIL BUNDLES 12 FIBER MM 50/125 OM3

| PART # | DESCRIPTION |
|------------|-------------------------------------|
| LC | |
| P5GLC12-1M | PIGTAIL ASSY,50umOM3,LC,12F,1 METER |
| P5GLC12-3M | PIGTAIL ASSY,50umOM3,LC,12F,3 METER |

PIGTAIL BUNDLES 6 FIBER MM 50/125 OM4

| PART # | DESCRIPTION |
|------------|-------------------------------------|
| LC | |
| P5QLC06-3M | PIGTAIL ASSY,50umOM4,LC,6F,3 METERS |
| SC | |
| P5QSC06-3M | PIGTAIL ASSY,50umOM4,SC,6F,2 METERS |

PIGTAIL BUNDLES 12 FIBER MM 50/125 OM4

| PART # | DESCRIPTION |
|------------|--------------------------------------|
| LC | |
| P5QLC12-3M | PIGTAIL ASSY,50umOM4,LC,12F,3 METERS |
| SC | |
| P5QSC12-3M | PIGTAIL ASSY,50umOM4,SC,12F,3 METERS |

PIGTAIL BUNDLES 6 FIBER SM 9/125

| LC/APC | DESCRIPTION |
|--------------|-----------------------------------|
| P8LCAPC06-3M | PIGTAIL ASSY,SM,LCAPC,6F,3 METERS |
| SC/APC | DESCRIPTION |
| P8SCAPC06-3M | PIGTAIL ASSY,SM,SCAPC,6F,3 METERS |
| LC | DESCRIPTION |
| P8LCUPC06-1M | PIGTAIL ASSY,SM,LCUPC,6F,1 METER |
| P8LCUPC06-2M | PIGTAIL ASSY,SM,LCUPC,6F,2 METER |
| P8LCUPC06-3M | PIGTAIL ASSY,SM,LCUPC,6F,3 METER |
| SC | DESCRIPTION |
| P8SCUPC06-1M | PIGTAIL ASSY,SM,SCUPC,6F,1 METER |
| P8SCUPC06-2M | PIGTAIL ASSY,SM,SCUPC,6F,2 METER |
| P8SCUPC06-3M | PIGTAIL ASSY,SM,SCUPC,6F,3 METER |

PIGTAIL BUNDLES 12 FIBER SM 9/125

| PART # | DESCRIPTION |
|--------------|-----------------------------------|
| LC/APC | DESCRIPTION |
| P8LCAPC12-1M | PIGTAIL ASSY,SM,LCAPC,12F,1 METER |
| P8LCAPC12-3M | PIGTAIL ASSY,SM,LCAPC,12F,2 METER |
| LC | DESCRIPTION |
| P8LCUPC12-1M | PIGTAIL ASSY,SM,LCUPC,12F,1 METER |
| P8LCUPC12-2M | PIGTAIL ASSY,SM,LCUPC,12F,2 METER |
| P8LCUPC12-3M | PIGTAIL ASSY,SM,LCUPC,12F,3 METER |
| SC/APC | DESCRIPTION |
| P8SCAPC12-1M | PIGTAIL ASSY,SM,SCAPC,12F,1 METER |
| P8SCAPC12-2M | PIGTAIL ASSY,SM,SCAPC,12F,2 METER |
| P8SCAPC12-3M | PIGTAIL ASSY,SM,SCAPC,12F,3 METER |
| SC | DESCRIPTION |
| P8SCUPC12-1M | PIGTAIL ASSY,SM,SCUPC,12F,1 METER |
| P8SCUPC12-2M | PIGTAIL ASSY,SM,SCUPC,12F,2 METER |
| P8SCUPC12-3M | PIGTAIL ASSY,SM,SCUPC,12F,3 METER |
| ST | DESCRIPTION |
| P8STUPC12-1M | PIGTAIL ASSY,SM,STUPC,12F,1 METER |
| P8STUPC12-2M | PIGTAIL ASSY,SM,STUPC,12F,2 METER |
| P8STUPC12-3M | PIGTAIL ASSY,SM,STUPC,12F,3 METER |

OCC ROANOKE, VA
 Corporate Headquarters and Fiber
 Optic Cable Manufacturing Facility
 5290 Concourse Drive
 Roanoke, VA 24019 USA
 540-265-0690 or 800-622-7711

OCC DALLAS, TX
 Harsh Environment and Specialty
 Connectivity Manufacturing Facility
 1700 Capital Avenue, Suite 150
 Plano, TX 75074 USA
 972-509-1500 or 877-509-01500

OCC ASHEVILLE, NC
 Enterprise Connectivity
 Manufacturing Facility
 33 Superior Way
 Swannanoa, NC 28778 USA
 828-298-2260 or 800-880-7674