

# ENTERPRISE SYSTEM QUICK REFERENCE PRODUCT GUIDE

- » FIBER OPTIC CABLE
- » HYBRID CABLE
- » COPPER CABLE
- » DEPLOYABLE SOLUTIONS
- » CONNECTIVITY & ASSEMBLIES
- » CABINETS & ENCLOSURES

SINGLE-MODE

OM1

OM3

OM4

FIBER ENCLOSURES  
& KITS

COPPER CABLE  
& CONNECTIVITY

RESI MULTIMEDIA  
& FACEPLATES

TOOLS

★  
**USA**  
OPERATIONS

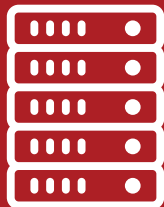
**PROUDLY HEADQUARTERED IN THE USA:**

OCC employs over 300 talented people across 3 strategically located US manufacturing facilities. OCC is a certified small business by the U.S. Small Business Association (SBA). We serve as leaders in technical and customer support. Our customers rely on us to provide quick lead times, fast shipping, and design-build expertise. Learn more at [occfiber.com/about-occ](http://occfiber.com/about-occ)



**RELIABLE CABLE & CONNECTIVITY SOLUTIONS PROVIDER:**

Our innovation and expertise has expanded beyond cable to include end-to-end fiber optic and copper cabling & connectivity solutions used everywhere from buildings, campuses and data centers, to sporting venues, industrial facilities and harsh environments. You can rely on OCC's strategic product portfolio for all your connectivity needs.



**99+**

**STRATEGIC GLOBAL PARTNERSHIPS:**

Each year, OCC products are used in countries all over the world. We offer some of the most rugged, reliable, and innovative cable and connectivity products and solutions.



**INNOVATIVE & RESPONSIVE EXPERTS**

Since 1983, OCC's innovative cable and connectivity designs have revolutionized the communications industry. Our history and growth have helped us attract and retain experts in manufacturing, engineering, and design-build applications. We partner with our customers to achieve the right solution. The entire process is simple, fast, and reliable.



FOUNDED  
& INNOVATING SINCE

**1983**

GET TO KNOW  
**OCC**

# FIBER OPTIC DISTANCE LIMITATION STANDARDS

FIBER CODE	CORE/CLADDING DIAMETER	WAVELENGTH	INDUSTRY STANDARD	1 GIGABIT ETHERNET DISTANCE	10 GIGABIT ETHERNET DISTANCE	MAXIMUM CABLE ATTENUATION	MAXIMUM LASER EMB BANDWIDTH (MHZ-KM)	MAXIMUM OFL LED BANDWIDTH (MHZ-KM)
WLS	62.5/125	850/1300	OM1	300/600	33/300	3.5/1.5	220/500	200/500
ALS	50/125	850/1300	OM2	600/600	82/300	3.5/1.5	510/500	500/500
ALT	50/125(300 METER 10-GBE)	850/1300	OM3	1000/600	300/300	3.0/1.0	2000/500	1500/500
ALE	50/125 (500 METER 10-GBE)	850/1300	OM4	1040/600	550/300	3.0/1.0	4700/500	3500/500
SLX	9/125	1310/1550	SINGLE-MODE ITU-T G.652 D	5 KM	10 KM	0.5/0.5	N/A	N/A
SLA	9/125	1310/1550	BEND INSENSITIVE SINGLE-MODE ITU-T G.657.A1 & ITU-T G.652.D	5 KM	10 KM	0.5/0.5	N/A	N/A

## OCC FIBER OPTIC CABLE CONSTRUCTION

We understand that every application has different demands, that's why we've created tiered solutions for our cables and products.

CABLE SERIES	APPLICATIONS									FIBER TYPE	PROTECTION PACKAGES
	INDOOR	OUTDOOR	INDOOR / OUTDOOR	DEPLOYABLE	LIGHT INDUSTRIAL	CABLE TRAY	HEAVY INDUSTRIAL	AERIAL LASHING	DIRECT BURIED		
DZ-SERIES	X		X							ALL	ILA
DX-SERIES	X	X	X	X	X			X	X	ALL	ILA, CST, FRP Braided
A-SERIES	X									ALL	
HD-SERIES	X									SM, OM3, OM4	
HC-SERIES	X	X	X	X	X	X	X	X	X	SM, OM1, OM3	ILA, CST, FRP
B-SERIES	X	X	X	X	X	X	X			ALL	ILA, CST, FRP Braided
G-SERIES	X		X			X				ALL	ILA
CX-SERIES	X		X		X					ALL	ILA

Available fiber counts vary by application, contact OCC Sales for more information.

# SINGLE-MODE

## FIBER OPTIC CABLES & ASSEMBLIES

### INDOOR/OUTDOOR CABLE, 900µm BUFFERED FIBER

DESCRIPTION	6-FIBER	12-FIBER	24-FIBER	48-FIBER
Indoor/Outdoor Cable, Riser Rated	<b>DX006DSLX9KR</b>	<b>DX012DSLX9KR</b>	<b>DX024DSLX9KR</b>	<b>DX048DSLX9KR</b>
Indoor/Outdoor Cable, Plenum Rated	<b>DZ006TSLX9YP</b>	<b>DZ012TSLX9YP</b>	<b>DZ024TSLX9YP</b>	<b>DX048KSLX9YP</b>
I/O with Aluminum Interlocking Armor (ILA) Cable, Riser Rated	<b>DX006DSLX9YRI2</b>	<b>DX012DSLX9YRI2</b>	<b>DX024DSLX9YRI2</b>	<b>DX048DSLX9YRI2</b>
I/O with Aluminum Interlocking Armor (ILA) Cable, Plenum Rated	<b>DZ006TSLX9YPI8</b>	<b>DZ012TSLX9YPI8</b>	<b>DZ024TSLX9YPI8</b>	<b>DX048KSLX9YPI6</b>

Other cable configurations and fiber counts available, contact OCC Sales for more information.

### HIGH-FIBER COUNT CABLE, 250µm ACRYLATE FIBER

DESCRIPTION	48-FIBER	72-FIBER	96-FIBER	144-FIBER
HC-Series Indoor/Outdoor Cable, Riser Rated	<b>HC048DSLACKR</b>	<b>HC072DSLACKR</b>	<b>HC096DSLACKR</b>	<b>HC144DSLACKR</b>
HD-Series Indoor Cable, Plenum Rated	<b>HD048SSLAJYP</b>	<b>HD072SSLAJYP</b>	<b>HD096SSLAJYP</b>	<b>HD144SSLAJYP</b>

Other cable configurations and fiber counts available, contact OCC Sales for more information.

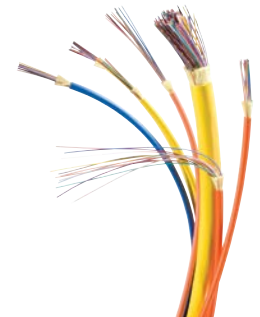
### PRE-TERMINATED CABLE ASSEMBLIES WITH PULLING EYE

DESCRIPTION	LC-TO-LC	SC-TO-SC	ST-TO-ST
DZ-Series Indoor/Outdoor Cable, 6-Fiber, Single-Mode Fiber, Plenum Rated Cable Assembly, 1 Meter	<b>OCA207551LCLC0001M</b>	<b>OCA207552SCSC0001M</b>	<b>OCA207553STST0001M</b>
DZ-Series Indoor/Outdoor Cable, 12-Fiber, Single-Mode Fiber, Plenum Rated Cable Assembly, 1 Meter	<b>OCA207554LCLC0001M</b>	<b>OCA207555SCSC0001M</b>	<b>OCA207556STST0001M</b>
DZ-Series Indoor/Outdoor Cable, 24-Fiber, Single-Mode Fiber, Plenum Rated Cable Assembly, 1 Meter	<b>OCA206796LCLC0001M</b>	<b>OCA207557SCSC0001M</b>	<b>OCA207558STST0001M</b>

Last three digits for the part numbers above indicates length and measurement. Other assembly lengths and Simplex configurations available.

### ADAPTER PLATES

DESCRIPTION	LC	SC	ST
Adapter Plate, 6-Port, Single-Mode, Ceramic Sleeve	<b>616SMDLC</b>	<b>616SMDSC</b>	<b>616SMST</b>
Adapter Plate, 12-Port, Single-Mode, Ceramic Sleeve	<b>6112SMDLC</b>	<b>6112SMDSC</b>	<b>6112SMDST</b>
Adapter Plate, 24-Port, Single-Mode, Ceramic Sleeve	<b>6124SMQLC</b>	<b>N/A</b>	<b>N/A</b>



**Time and Cost Savings:**  
 We understand that a key variable to a successful installation is ready access to parts as you need them. OCC can help you save valuable installation time & inventory costs with our custom kitted solutions. **Contact OCC Sales for more information** [occfiber.com/contact](http://occfiber.com/contact)



SINGLE-MODE

OM1

OM3

OM4

FIBER ENCLOSURES & KITS

COPPER CABLE & CONNECTIVITY

RESI MULTIMEDIA & WORKSTATION

TOOLS

# SINGLE-MODE



## CONNECTORS, ADAPTER PLATES, FIBER SPLICE CASSETTES, & JUMPERS

### FIBER OPTIC CONNECTORS, MECHANICAL SPLICE

DESCRIPTION	LC	SC	ST
Xpress Ultra™ Fiber Connector, Pre-Polished, Single-Mode, 250/900	RFC-LC8	RFC-SC8	FXC-ST8-6 (6-PACK)
Xpress Ultra™ Fiber Connector, Pre-Polished, Single-Mode, APC, 250/900	RFC-LCAPC	RFC-SCAPC	N/A
Xpress Ultra™ Fiber Connector, Pre-Polished, Single-Mode, 2/3mm	RFC-LC8-2/3MM	RFC-SC8-2/3MM	N/A
Xpress Ultra™ Fiber Connector, Pre-Polished, Single-Mode, APC, 2/3mm	RFC-LCAPC-2/3MM	RFC-SCAPC-2/3MM	N/A
2.0mm Boot for FXC Connectors (6-pack)	N/A	N/A	FXC-BOOT-2MM
3.0mm Boot for FXC Connectors (6-pack)	N/A	N/A	FXC-BOOT-3MM



OCC RFC-SCAPC  
Xpress Ultra Connector

### FIBER SPLICE CASSETTES

DESCRIPTION	LC	SC	ST
12 Fiber, Single-Mode Connectors with Fiber Pigtailed	FSCS812DLCP	FSCS812DSCP	N/A
24 Fiber, Single-Mode Connectors with Fiber Pigtailed	FSCS824QLCP	N/A	N/A
12 Fiber, Single-Mode, APC Connectors with Fiber Pigtailed	FSCSA12DLCP	FSCSA12DSCP	N/A
24 Fiber, Single-Mode, APC Connectors with Fiber Pigtailed	FSCSA24QLCP	N/A	N/A

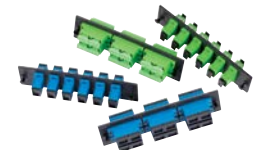
Other options available, contact OCC Sales for more information.



OCC 24-Fiber Single  
Mode Splice Cassette

### FIBER OPTIC DUPLEX JUMPERS SM 9/125

DESCRIPTION	LC-TO-LC	SC-TO-SC	ST-TO-ST
F.O. Jumper, SM, 3 Meter, Yellow, Duplex	D8LC-LC-3M	D8SC-SC-3M	D8ST-ST-3M
F.O. Jumper, SM, 2 Meter, Yellow, Duplex	D8LC-LC-2M	D8SC-SC-2M	D8ST-ST-2M
F.O. Jumper, SM/APC, 1 Meter, Yellow, Duplex	D8LCAPC-LCAPC-1M	D8SCAPC-SCAPC-1M	N/A
F.O. Jumper, SM/APC, 2 Meters, Yellow, Duplex	D8LCAPC-LCAPC-2M	D8SCAPC-SCAPC-2M	N/A



OCC Fiber Adapter Plates

### FIBER OPTIC PIGTAILS

DESCRIPTION	OCC PART #
Pigtail Assembly, SM, LC, Ultra Polish, 12-Fiber, 3 Meters	P8LCUPC12-3M
Pigtail Assembly, SM, LC, APC, 12-Fiber, 3 Meters	P8LCAPC12-3M
Pigtail Assembly, SM, SC, Ultra Polish, 12-Fiber, 3 Meters	P8SCUPC12-3M
Pigtail Assembly, SM, ST, Ultra Polish, 12-Fiber, 3 Meters	P8STUPC12-3M
Pigtail Assembly, SM, SC, APC, 12-Fiber, 3 Meters	P8SCAPC12-3M

Last two digits of part  
number indicate length.  
Other lengths available.



Call us today about our Single-Mode options.  
OCC Sales at **800-622-7711** for more information.

SINGLE-MODE

OM1

OM3

OM4

FIBER ENCLOSURES  
& KITS

COPPER CABLE  
& CONNECTIVITY

RESI MULTIMEDIA  
& WORKSTATION

TOOLS

# OM1

## FIBER OPTIC CABLES, ASSEMBLIES, JUMPERS & PIGTAILS



### INDOOR/OUTDOOR CABLE, 62.5/125µm BUFFERED FIBER

DESCRIPTION	6-FIBER	12-FIBER	24-FIBER	48-FIBER
Indoor/Outdoor Cable, Riser Rated	<b>DX006DWLS9KR</b>	<b>DX012DWLS9KR</b>	<b>DX024DWLS9KR</b>	<b>DX048DWLS9KR</b>
Indoor/Outdoor Cable, Plenum Rated	<b>DZ006TWLS90P</b>	<b>DZ012TWLS90P</b>	<b>DZ024TWLS90P</b>	<b>DX048KWLS90P</b>
I/O with Aluminum Interlocking Armor (ILA) Cable, Riser Rated	<b>DX006DWLS90RI2</b>	<b>DX012DWLS90RI2</b>	<b>DX024DWLS90RI2</b>	<b>DX048DWLS90RI2</b>
I/O with Aluminum Interlocking Armor (ILA) Cable, Plenum Rated	<b>DZ006TWLS90PI8</b>	<b>DZ012TWLS90PI8</b>	<b>DZ024TWLS90PI8</b>	<b>DX048KWLS90PI6</b>

Other cable configurations and fiber counts available, contact OCC Sales for more information.

### HIGH FIBER COUNT CABLE, 250µm ACRYLATE FIBER

DESCRIPTION	48-FIBER	72-FIBER	96-FIBER	144-FIBER
HC-Series High-Density Indoor/Outdoor Cable, Riser Rated	<b>HC048DWLSCKR</b>	<b>HC072DWLSCKR</b>	<b>HC096DWLSCKR</b>	<b>HC144DWLSCKR</b>

Other fiber strand counts available, contact OCC Sales for more information.

### PRE-TERMINATED CABLE ASSEMBLIES WITH PULLING EYE

DESCRIPTION	LC-TO-LC	SC-TO-SC	ST-TO-ST
DZ-Series Indoor/Outdoor Cable, 6-Fiber, 62.5 OM1, Plenum Rated Cable Assembly, 1 Meter	<b>OCA207566LCLC0001M</b>	<b>OCA207567SCSC0001M</b>	<b>OCA207568STST0001M</b>
DZ-Series Indoor/Outdoor Cable, 12-Fiber, 62.5 OM1, Plenum Rated Cable Assembly, 1 Meter	<b>OCA207569LCLC0001M</b>	<b>OCA207570SCSC0001M</b>	<b>OCA207571STST0001M</b>
DZ-Series Indoor/Outdoor Cable, 24-Fiber, 62.5 OM1, Plenum Rated Cable Assembly, 1 Meter	<b>OCA207572LCLC0001M</b>	<b>OCA207573SCSC0001M</b>	<b>OCA207574STST0001M</b>

Last three digits of the part numbers above indicate length and measurement. Other assembly lengths and configurations available.

### FIBER OPTIC DUPLEX JUMPERS MM 62.5/125

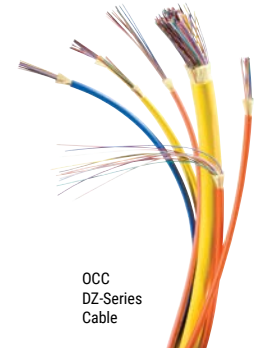
DESCRIPTION	LC-LC	SC-SC	ST-ST
F.O. Jumper, MM, 1 Meter, Orange, Duplex	<b>D6LC-LC-1M</b>	<b>D6SC-SC-1M</b>	<b>D6ST-ST-1M</b>
F.O. Jumper, MM, 2 Meters, Orange, Duplex	<b>D6LC-LC-2M</b>	<b>D6SC-SC-2M</b>	<b>D6ST-ST-2M</b>

Last two digits of part number indicate length, other lengths available.

### FIBER OPTIC PIGTAILS

DESCRIPTION	OCC PART #
Pigtail Assembly, OM1, LC, 12-Fiber, 3 Meters	<b>P6LC12-3M</b>
Pigtail Assembly, OM1, SC, 12-Fiber, 3 Meters	<b>P6SC12-3M</b>
Pigtail Assembly, OM1, ST, 12-Fiber, 3 Meters	<b>P6ST12-3M</b>

Last two digits of part number indicate length, other lengths available.



OCC  
DZ-Series  
Cable

### Products to Fit Every Need:

OCC offers one of the largest product portfolios in the industry. Explore our superior fiber & copper connectivity solutions designed to meet your needs today and well into the future

Get more information at:  
[occfiber.com/library](http://occfiber.com/library)



# OM1



## CONNECTORS, ADAPTER PLATES, FIBER SPLICE CASSETTES, & PATCH CORDS

### FIBER OPTIC CONNECTORS, MECHANICAL SPLICE

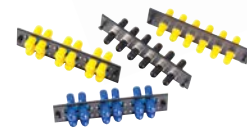
DESCRIPTION	LC	SC	ST
Xpress Ultra™ Fiber Connector, Pre-Polished, 62.5, 250/900	RFC-LC6	RFC-SC6	FXC-ST6-6 (6-PACK)
Xpress Ultra™ Fiber Connector, Pre-Polished, 62.5, 2/3mm	RFC-LC6-2/3MM	RFC-SC6-2/3MM	N/A
2.0mm Boot for FXC Connectors (6-pack)	N/A	N/A	FXC-BOOT-2MM
3.0mm Boot for FXC Connectors (6-pack)	N/A	N/A	FXC-BOOT-3MM



OCC Xpress Ultra LC Connector

### ADAPTER PLATES

DESCRIPTION	LC	SC	ST
Adapter Plate, 6-Port, OM1, Ceramic Sleeve	616MMDLC	616MMDSC	616MMST
Adapter Plate, 12-Port, OM1, Ceramic Sleeve	6112MMDLC	6112MMDSC	6112MMDST
Adapter Plate, 24-Port, OM1, Ceramic Sleeve	6124MMQLC	N/A	N/A



OCC Fiber Adapter Plates

### FIBER SPLICE CASSETTES

DESCRIPTION	LC	SC	ST
6-Fiber Cassette, OM1 Connectors with Pigtailed	FSCS16DLCF	FSCS16SSCP	FSCS16SSTP
12-Fiber Cassette, OM1 Connectors with Pigtailed	FSCS112DLCF	FSCS112DSCP	N/A
24-Fiber Cassette, OM1 Connectors with Pigtailed	FSCS124QLCF	N/A	N/A

Other options available, contact OCC Sales for more information.



OCC Fiber Splice Cassette



OCC Fiber Adapter Plates



We also offer OM2 connectivity options.  
Call OCC Sales at 800-622-7711 for more information.

SINGLE-MODE

OM1

OM3

OM4

FIBER ENCLOSURES  
& KITS

COPPER CABLE  
& CONNECTIVITY

RESI MULTIMEDIA  
& WORKSTATION

TOOLS

# OM3



## CONNECTORS, ADAPTER PLATES, FIBER SPLICE CASSETTES

### INDOOR/OUTDOOR CABLE, 900µm BUFFERED FIBER

DESCRIPTION	6-FIBER	12-FIBER	24-FIBER	48-FIBER
Indoor/Outdoor Cable, Riser Rated	<b>DX006DALT9QR</b>	<b>DX012DALT9QR</b>	<b>DX024DALT9QR</b>	<b>DX048DALT9QR</b>
Indoor/Outdoor Cable, Plenum Rated	<b>DZ006TALT9QP</b>	<b>DZ012TALT9QP</b>	<b>DZ024TALT9QP</b>	<b>DX048KALT9QP</b>
I/O with Aluminum Interlocking Armor (ILA) Cable, Riser Rated	<b>DX006DALT9QRI2</b>	<b>DX012DALT9QRI2</b>	<b>DX024DALT9QRI2</b>	<b>DX048DALT9QRI2</b>
I/O with Aluminum Interlocking Armor (ILA) Cable, Plenum Rated	<b>DZ006TALT9QPI8</b>	<b>DZ012TALT9QPI8</b>	<b>DZ024TALT9QPI8</b>	<b>DX048KALT9QPI6</b>

Other cable configurations and fiber counts available, contact OCC Sales for more information.

### HIGH FIBER COUNT CABLE, 250µm ACRYLATE FIBER

DESCRIPTION	48-FIBER	72-FIBER	96-FIBER	144-FIBER
HC-Series Indoor/Outdoor Cable, Riser Rated	<b>HC048DALTCKR</b>	<b>HC072DALTCKR</b>	<b>HC096DALTCKR</b>	<b>HC144DALTCKR</b>
HD-Series Indoor Cable, Plenum Rated	<b>HD048SALTJQP</b>	<b>HD072SALTJQP</b>	<b>HD096SALTJQP</b>	<b>HD144SALTJQP</b>

Other cable configurations and fiber counts available, contact OCC Sales for more information.

### PRE-TERMINATED CABLE ASSEMBLIES WITH PULLING EYE

DESCRIPTION	LC-TO-LC	SC-TO-SC	ST-TO-ST
DZ-Series Indoor/Outdoor Cable, 6-Fiber, 50µm OM3, Plenum Rated Cable Assembly, 1 Meter	<b>OCA206943LCLC0001M</b>	<b>OCA207513SCSC0001M</b>	<b>OCA207519STST0001M</b>
DZ-Series Indoor/Outdoor Cable, 12-Fiber, 50µm OM3, Plenum Rated Cable Assembly, 1 Meter	<b>OCA206410LCLC0001M</b>	<b>OCA207520SCSC0001M</b>	<b>OCA207521STST0001M</b>
DZ-Series Indoor/Outdoor Cable, 24-Fiber, 50µm OM3, Plenum Rated Cable Assembly, 1 Meter	<b>OCA207522LCLC0001M</b>	<b>OCA207523SCSC0001M</b>	<b>OCA207524STST0001M</b>

Last three digits of the part numbers above indicate length and measurement. Other assembly lengths and configurations available.

### FIBER OPTIC JUMPERS

DESCRIPTION	LC-TO-LC	SC-TO-SC	ST-TO-ST
F.O. Jumper, OM3, 1 Meter, Aqua, Duplex	<b>D5LC-LC-1MG</b>	<b>D5SC-SC-1MG</b>	<b>D5ST-ST-1MG</b>
F.O. Jumper, OM3, 2 Meters, Aqua, Duplex	<b>D5LC-LC-2MG</b>	<b>D5SC-SC-2MG</b>	<b>D5ST-ST-2MG</b>

Last two digits of part number indicate length, other lengths available.

### FIBER OPTIC PIGTAILS

DESCRIPTION	OCC PART #
Pigtail Assembly, 50µm OM3, LC, 12-Fiber, 3 Meters	<b>P5GLC12-3M</b>
Pigtail Assembly, 50µm OM3, SC, 12-Fiber, 3 Meters	<b>P5GSC12-3M</b>
Pigtail Assembly, 50µm OM3, ST, 12-Fiber, 3 Meters	<b>P5GST12-3M</b>

Last two digits of part number indicate length, other lengths available.



OCC DX-Series Aluminum Interlocking Armored (ILA) Cable

### Flexible, Versatile, & Scalable:

OCC's Fiber Splice Cassette is a versatile, cost-effective solution designed to work in almost any Enterprise closet application.

Visit us online to learn more: [occfiber.com/product/fiber-splice-cassette/](http://occfiber.com/product/fiber-splice-cassette/)



SINGLE-MODE

OM1

OM3

OM4

FIBER ENCLOSURES & KITS

COPPER CABLE & CONNECTIVITY

RESI MULTIMEDIA & WORKSTATION

TOOLS



## CONNECTORS, ADAPTER PLATES, FIBER SPLICE CASSETTES

### FIBER OPTIC CONNECTORS, MECHANICAL SPLICE

DESCRIPTION	LC	SC	ST
Xpress Ultra™ Fiber Connector, Pre-Polished, OM3, 250/900	<b>RFC-LC5G</b>	<b>RFC-SC5G</b>	<b>FXC-ST5G-6 (6-PACK)</b>
Xpress Ultra™ Fiber Connector, Pre-Polished, OM3, 2/3mm	<b>RFC-LC5G-2/3MM</b>	<b>RFC-SC5G-2/3MM</b>	<b>N/A</b>
2.0mm Boot for FXC Connectors (6-pack)	<b>N/A</b>	<b>N/A</b>	<b>FXC-BOOT-2MM</b>
3.0mm Boot for FXC Connectors (6-pack)	<b>N/A</b>	<b>N/A</b>	<b>FXC-BOOT-3MM</b>

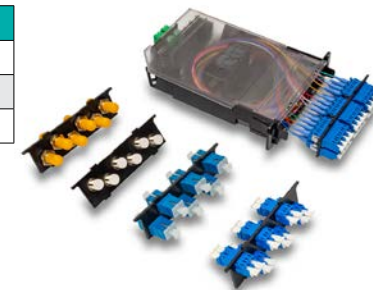
### ADAPTER PLATES

DESCRIPTION	LC	SC	ST
Adapter Plate, 6-Port, OM3, Ceramic Sleeve	<b>616DLC50G</b>	<b>616DSC50G</b>	<b>616MMSTG</b>
Adapter Plate, 12-Port, OM3, Ceramic Sleeve	<b>6112DLC50G</b>	<b>6112DSC50G</b>	<b>6112DST50G</b>
Adapter Plate, 24-Port, OM3, Ceramic Sleeve	<b>6124QLC50G</b>	<b>N/A</b>	<b>N/A</b>

### FIBER SPLICE CASSETTES

DESCRIPTION	LC	SC	ST
6-Fiber, OM3 Connectors with Pigtails	<b>FSCS36DLCP</b>	<b>FSCS36SSCP</b>	<b>FSCS36SSTP</b>
12-Fiber, OM3 Connectors with Pigtails	<b>FSCS312DLCP</b>	<b>FSCS312DSCP</b>	<b>N/A</b>
24-Fiber, OM3 Connectors with Pigtails	<b>FSCS324QLCP</b>	<b>N/A</b>	<b>N/A</b>

OCC offers Anaerobic Fiber Optic Connectors for those who prefer to assemble connectors at the component level. Each connector kit offers exceptional optical performance in an easy-to-install form factor.



OCC Fiber Splice Cassette with Fiber Adapter Plates



Call us today to talk about our OM3 options.  
OCC Sales at **800-622-7711** for more information.

# OM4



## FIBER OPTIC CABLES, ASSEMBLIES, JUMPERS & PIGTAILS

### INDOOR/OUTDOOR CABLE, 900µm BUFFERED FIBER

DESCRIPTION	6-FIBER	12-FIBER	24-FIBER	48-FIBER
Indoor/Outdoor Cable, Riser Rated	<b>DX006DALE9QR</b>	<b>DX012DALE9QR</b>	<b>DX024DALE9QR</b>	<b>DX048DALE9QR</b>
Indoor/Outdoor Cable, Plenum Rated	<b>DZ006TALE9QP</b>	<b>DZ012TALE9QP</b>	<b>DZ024TALE9QP</b>	<b>DX048KALE9QP</b>
I/O with Aluminum Interlocking Armor (ILA) Cable, Riser Rated	<b>DX006DALE9QRI2</b>	<b>DX012DALE9QRI2</b>	<b>DX024DALE9QRI2</b>	<b>DX048DALE9QRI2</b>
I/O with Aluminum Interlocking Armor (ILA) Cable, Plenum Rated	<b>DZ006TALE9QPI8</b>	<b>DZ012TALE9QPI8</b>	<b>DZ024TALE9QPI8</b>	<b>DX048KALE9QPI6</b>

Other cable configurations and fiber counts available, contact OCC Sales for more information.



OCC HD-Series Cable

### HIGH FIBER COUNT CABLE, 250µm ACRYLATE FIBER

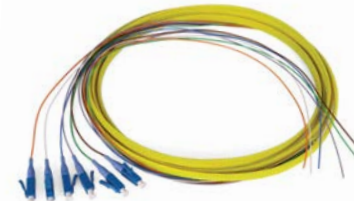
DESCRIPTION	48-FIBER	72-FIBER	96-FIBER	144-FIBER
HD-Series Indoor Cable, Plenum Rated	<b>HD048SALEJQP</b>	<b>HD072SALEJQP</b>	<b>HD096SALEJQP</b>	<b>HD144SALEJQP</b>

Other cable configurations and fiber counts available, contact OCC Sales for more information.

### PRE-TERMINATED CABLE ASSEMBLIES WITH PULLING EYE

DESCRIPTION	LC-TO-LC	SC-TO-SC	ST-TO-ST
DZ-Series Indoor/Outdoor Cable, 6-Fiber, 50µm OM4, Plenum Rated Cable Assembly, 1 Meter	<b>OCA207531LCLC0001M</b>	<b>OCA207533SCSC0001M</b>	<b>OCA207534STST0001M</b>
DZ-Series Indoor/Outdoor Cable, 12-Fiber, 50µm OM4, Plenum Rated Cable Assembly, 1 Meter	<b>OCA207536LCLC0001M</b>	<b>OCA207537SCSC0001M</b>	<b>OCA207538STST0001M</b>
DZ-Series Indoor/Outdoor Cable, 24-Fiber, 50µm OM4, Plenum Rated Cable Assembly, 1 Meter	<b>OCA207541LCLC0001M</b>	<b>OCA207542SCSC0001M</b>	<b>OCA207544STST0001M</b>

Last three digits of the part numbers above indicate length and measurement. Other assembly lengths and configurations available, contact OCC Sales for more information.



OCC Pre-Terminated 6-Fiber Assembly

### FIBER OPTIC JUMPERS

DESCRIPTION	LC-TO-LC	SC-TO-SC	ST-TO-ST
F.O. Jumper, 50µm OM4, 1 Meter, Aqua, Duplex	<b>D5LC-LC-1MQ</b>	<b>D5SC-SC-1MQ</b>	<b>D5ST-ST-1MQ</b>
F.O. Jumper, 50µm OM4, 2 Meters, Aqua, Duplex	<b>D5LC-LC-2MQ</b>	<b>D5SC-SC-2MQ</b>	<b>D5ST-ST-2MQ</b>

Last two digits of part number indicate length, other lengths available.

### FIBER OPTIC PIGTAILS

DESCRIPTION	OCC PART #
Pigtail Assembly, 50µm OM4, LC, 12-Fiber, 3 Meters	<b>P5QLC12-3M</b>
Pigtail Assembly, 50µm OM4, SC, 12-Fiber, 3 Meters	<b>P5QSC12-3M</b>
Pigtail Assembly, 50µm OM4, ST, 12-Fiber, 3 Meters	<b>P5QST12-3M</b>

Last two digits of part number indicate length, other lengths available.

# OM4



## CONNECTORS, ADAPTER PLATES, FIBER SPLICE CASSETTES, & JUMPERS

### FIBER OPTIC CONNECTORS, MECHANICAL SPLICE

DESCRIPTION	LC	SC	ST
Fiber Connector, Pre-Polished, OM4, 250/900 Boot	RFC-LC5G	RFC-SC5	FXC-ST5G-6 (6-PACK)
Fiber Connector, Pre-Polished, OM4, 2/3mm Boot	RFC-LC5G-2/3MM	RFC-SC5G-2/3MM	N/A
2.0mm Boot for FXC Connectors (6-pack)	N/A	N/A	FXC-BOOT-2MM
3.0mm Boot for FXC Connectors (6-pack)	N/A	N/A	FXC-BOOT-3MM



OCC Pre-Polished OM4 Adapter

### ADAPTER PLATES

DESCRIPTION	LC	SC	ST
Adapter Plate, 6-Port, OM4, Ceramic Sleeve	616DLC50Q	616DSC50Q	616MMSTQ
Adapter Plate, 12-Port, OM4, Ceramic Sleeve	6112DLC50Q	6112DSC50Q	6112DST50Q
Adapter Plate, 24-Port, OM4, Ceramic Sleeve	6124QLC50Q	N/A	N/A



OCC Fiber Adapter Plates

### FIBER SPLICE CASSETTES

DESCRIPTION	LC	SC	ST
6-Fiber, OM4 Connectors with Pigtails	FSCS46DLC	FSCS46DSCP	FSCS46SSTP
12-Fiber, OM4 Connectors with Pigtails	FSCS412DLC	FSCS412DSCP	N/A
24-Fiber, OM4 Connectors with Pigtails	FSCS424QLC	N/A	N/A



OCC Fiber Splice Cassette



Call us today to talk about our OM4 options.  
OCC Sales at **800-622-7711** for more information.

# FIBER OPTIC ENCLOSURES



## RACK MOUNT ENCLOSURES

DESCRIPTION	OCC PART #
Rack Mount Fiber Enclosure, 1RU, Holds up to 3 Adapter Plates, Black	<b>RTC1U-3APB</b>
Rack Mount Fiber Enclosure, 2RU, Holds up to 6 Adapter Plates, Black	<b>RTC2U-6APB</b>
Rack Mount Fiber Enclosure, 4RU, Holds up to 12 Adapter Plates, Black	<b>RTC4U-12APB</b>
Rack Mount Fiber Enclosure, 1RU, Sliding, Holds up to 3 Adapter Plates, Black	<b>RTS1U-3APB</b>
Rack Mount Fiber Enclosure, 2RU, Sliding, Holds up to 6 Adapter Plates, Black	<b>RTS2U-6APB</b>
Fiber Enclosure, Rack Mount, 4RU, Sliding, Holds up to 12 Adapter Plates, Black	<b>RTS4U-12APB</b>

Factory installed locking options available.



RTC/RTS Fiber Enclosures

## WALL MOUNT FIBER ENCLOSURES

DESCRIPTION	OCC PART #
Wall Mount Fiber Enclosure, Holds up to 6 Adapter Plates, 17"W x 16.3"H x 5"D, No Inner Door	<b>WTC6APB</b>
Wall Mount Fiber Enclosure, Holds up to 12 Adapter Plates, 18.5"W x 18"H x 6"D, No Inner Door	<b>WTC12APB</b>
Wall Mount Fiber Legacy Enclosure, with Lockable Inner Door, Holds up to 4 Adapter Plates, 13"H x 12"W x 3.5"D	<b>WTC12/24B</b>
Wall Mount Mini Enclosure, Holds 1 Adapter Plate, 7"W x 6"H x 1.36"D	<b>ZDMB6B</b>
Zone Distribution Enclosure, (Empty) holds 1 Adapter Plate, 9.5"W x 7"H x 1.5"D	<b>ZDMBC1AP</b>
Fiber Distribution Hub Enclosure, 13RU, 21.18"W x 24.78"H x 11"D	<b>FDH13RU</b>



Wall Mount WTC Enclosure



Wall Mount Mini Cassette Enclosure (ZDMBC1AP)

## DIN RAIL FIBER ENCLOSURES

DESCRIPTION	OCC PART #
DIN Rail Fiber Enclosure, Holds 1 Adapter Plate, Cable Entry Grommet, Black, Empty	<b>DTC1AP</b>
DIN Rail Fiber Enclosure, Holds 2 Adapter Plates, Cable Entry Grommet, Black, Empty	<b>DTC2AP</b>
DIN Rail Fiber Enclosure, Holds 1 Adapter Plate, Liquid Tight Cable Gland, Black, Empty	<b>DTC1APG</b>
DIN Rail Fiber Enclosure, Holds 2 Adapter Plates, Liquid Tight Cable Gland, Black, Empty	<b>DTC2APG</b>



DIN Rail Fiber Enclosure



Call us today to talk about our Fiber Optic options.  
OCC Sales at **800-622-7711** for more information.

SINGLE-MODE

OM1

OM3

OM4

FIBER ENCLOSURES & KITS

COPPER CABLE & CONNECTIVITY

RESI MULTIMEDIA & WORKSTATION

TOOLS

# FIBER OPTIC ENCLOSURES & KITS



## WALL MOUNT NEMA FIBER ENCLOSURES

DESCRIPTION	OCC PART #
NEMA 4X Enclosure, 12-Port, Holds 2 Adapter Plates, 10"H x 8"W x 4"D	<b>OC012NX</b>
NEMA 4X Enclosure, 12-Port, Holds 2 Adapter Plates, Includes Patch/Splice Block, 10"H x 8"W x 4"D	<b>OC012NXSB</b>
NEMA 4X Enclosure, 48-Port, Holds 8 Adapter Plates, 16.5"H x 14.5"W x 8.1"D	<b>OC048NX</b>
NEMA 4X Enclosure, Patch & Splice, Includes 1-W48S Kit (2-24 Fiber Splice Trays, Transition Trays, Mounting Hardware, Cable Management, & Port Identification), 16.5"H x 14.5"W x 8.1"D	<b>OC048NXS</b>
NEMA 3 Outdoor Rated Enclosure, 6-Port, Holds 1 Adapter Plate, 11.5"H x 8.5"W x 3"D	<b>OC06N</b>
NEMA 3 Outdoor Rated Enclosure, 12-Port, Holds 2 Adapter Plates, 11.5"H x 8.5"W x 3"D	<b>OC012N</b>



NEMA 3 Enclosure

## SPLICE TRAY KITS

### RACK MOUNT

DESCRIPTION	OCC PART #
Rack Mount Splice Tray Kit, (2) Splice Trays, For Use With RTC/RTS1U, 72 Splices	<b>RS1U2T</b>
Rack Mount Splice Tray Kit, (4) Splice Trays, For Use With RTC/RTS2U, 144 Splices	<b>RS2U4T</b>
Rack Mount Splice Tray Kit, (8) Splice Trays, for Use with RTC/RTS4RU, 288 Splices	<b>RS4U8T</b>

Other Splice Tray Kits Available Upon Request.

### WALL MOUNT

DESCRIPTION	OCC PART #
Wall Mount Splice Tray Kit, For WTC12/24 & WTC6APB Enclosures, 24-Fiber Splice Tray	<b>W24PT</b>
Wall Mount Splice Tray Kit, For WTC12APB, 48-Fiber Splice Tray	<b>W48S</b>
Wall Mount Splice Tray Kit, For Use with WTC12APB, 72-Fiber Splice Tray	<b>W72S</b>



NEMA 4X Enclosure

Don't see what you're looking for?

Visit our full product offering online at [occfiber.com](http://occfiber.com)



Rack Mount Splice Tray Kit

SINGLE-MODE

OM1

OM3

OM4

FIBER ENCLOSURES & KITS

COPPER CABLE & CONNECTIVITY

RESI MULTIMEDIA & WORKSTATION

TOOLS

# CATEGORY 6A

## PATCH PANELS

DESCRIPTION	OCC PART #
Rack Mount Unloaded Panel, KMJ, 24-Port, 1RU	<b>AK24STP6A</b>
Rack Mount Unloaded Panel, KMJ, 48-Port, 2RU	<b>AK48STP6A</b>
Patch Panel, 24-Port, Category 6A, Field Config, 1RU, Includes K6A02 Connectors	<b>DCC2488/1106AN</b>
Patch Panel, 48-Port, Category 6A, Field Config, 2RU, Includes K6A02 Connectors	<b>DCC4888/1106AN</b>
Patch Panel, 24-Port, Category 6A, UTP, 1RU, Angled, Includes K6A02 Connectors	<b>ACC2488/1106AN</b>
Patch Panel, 48-Port, Category 6A, UTP, 2RU, Angled, Includes K6A02 Connectors	<b>ACC4888/1106AN</b>
Patch Panel, 24-Port, Category 6A, Shielded, 1RU, Includes K6AS Connectors	<b>DCC2488/1106A-S</b>
Patch Panel, 48-Port, Category 6A, Shielded, 2RU, Includes K6AS Connectors	<b>DCC4888/1106A-S</b>
Patch Panel, 24-port, Category 6A, 110 Punch Down, UTP, 1RU	<b>DCC2488/1106APD</b>
Patch Panel, 48-port, Category 6A, 110 Punch Down, UTP, 2RU	<b>DCC4888/1106APD</b>
Patch Panel, 24-Port, Category 6A, Shielded, 1RU, Angled, Includes K6AS Connectors	<b>ACC2488/1106A-S</b>
Patch Panel, 48-Port, Category 6A, Shielded, 2RU, Angled, Includes K6AS Connectors	<b>ACC4888/1106A-S</b>
1RU Wall Mount Bracket, 1.75"H x 19.69"W x 3.94"D	<b>WF101</b>
2RU Wall Mount Bracket, 3.50"H x 19.0"W x 5.0"D	<b>WMB3519</b>

Wall Mount Brackets can be utilized with all OCC Patch Panels.

**10G-Capable:** OCC's end-to-end Category 6A Copper Solution provides a backward-compatible solution that includes cables, jacks, field terminable plugs, patch panels, faceplates, and patch cords.

Visit [hubs.ly/H0tszTJO](https://hubs.ly/H0tszTJO)



## CABLE

DESCRIPTION	OCC PART #
Category 6A UTP CMP Small OD Cable	<b>OCC-U6A4SPLM-xx</b>
Category 6A UTP CMR Small OD Cable	<b>OCC-U6A4SR-xx</b>
Category 6A F/UTP CMP Cable	<b>OCC-FTP6A4PLM-xx</b>
Category 6A F/UTP CMR Cable	<b>OCC-FTP6A4R-xx</b>
Category 6A UTP CMP Indoor/Outdoor Cable	<b>OCC-U6A4PIO</b>

Replace "xx" with color code, see OCC Copper Cable Color Chart for Reference. Minimum Order Quantities may apply.

OCC COPPER CABLE COLOR CODE CHART

01 - Yellow	06 - Data Grey
02 - Black	07 - White
03 - Red	08 - Violet
04 - Green	09 - Orange
05 - Blue	

## KMJ JACKS & FIELD TERMINABLE PLUGS

DESCRIPTION	OCC PART #
Category 6A KMJ Outlet Jacks, UTP - Unshielded	<b>K6Axx</b>
Category 6A KMJ Outlet Jacks, STP - Shielded	<b>K6ASxx</b>
Category 6A Unshielded Field Terminable Plug	<b>OCCUFP6A</b>
Category 6A Shielded Field Terminable Plug	<b>OCCSFP6A</b>

Replace "xx" with color code, see OCC Jack Color Code Chart for reference

OCC JACK COLOR CODE CHART

00 - Electrical Ivory	06 - Data Grey
01 - Office White	08 - Orange
02 - Black	09 - Yellow
03 - Red	10 - Purple
04 - Green	11 - Brown
05 - Blue	12 - Bright White
	18 - Process Blue

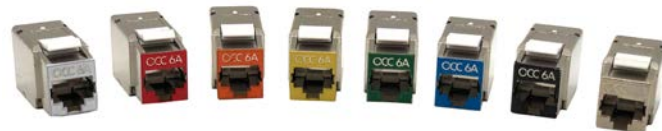
## PATCH CORDS

DESCRIPTION	OCC PART #
Category 6A Patch Cord, Unshielded, Booted, 3ft	<b>PC6AU-B-03yy</b>
Category 6A Patch Cord, Unshielded, Booted, 5ft	<b>PC6AU-B-05yy</b>
Category 6A Patch Cord, Unshielded, Booted, 7ft	<b>PC6AU-B-07yy</b>
Category 6A Shielded 28AWG Mini-Patch Cord, Yellow, 3ft	<b>PC6ASM03B01</b>
Category 6A Shielded 28AWG Mini-Patch Cord, Yellow, 5ft	<b>PC6ASM05B01</b>
Category 6A Shielded 28AWG Mini-Patch Cord, Yellow, 7ft	<b>PC6ASM07B01</b>

Replace "yy" with color code, see OCC Patch Cord Color Chart for Reference. Minimum Order Quantities may apply. Also available with Plenum Rating (add "P" to end of part number).

OCC PATCH CORD COLOR CODE CHART

01 - Yellow	06 - Data Grey
02 - Black	07 - White
03 - Red	08 - Orange
04 - Green	09 - Brown
05 - Blue	10 - Purple



KMJ Category 6A Shielded Jacks

SINGLE-MODE

OM1

OM3

OM4

FIBER ENCLOSURES & KITS

COPPER CABLE & CONNECTIVITY

RESI MULTIMEDIA & WORKSTATION

TOOLS

# COPPER CABLE & CONNECTIVITY



## CATEGORY 6

### CABLE

DESCRIPTION	OCC PART #
Category 6 High-Performance Plenum (CMP) Cable	<b>OCC-U64HPLM-xx</b>
Category 6 High-Performance Riser (CMR) Cable	<b>OCC-U64HR-xx</b>
Category 6 Plenum (CMP) Cable	<b>OCC-UE64PLM-xx</b>
Category 6 Riser (CMR)	<b>OCC-UE64R-xx</b>
Category 6 F/UTP Shielded (CMP) Cable	<b>OCC-FTP64PLM-xx</b>
Category 6 F/UTP Shielded (CMR) Cable	<b>OCC-FTP64R-xx</b>
Category 6 OSP Cable	<b>OCC-U64OSP</b>

Replace "xx" with color code, see OCC Copper Cable Color Chart for reference. Minimum Order Quantities may apply.

### KMJ JACKS

DESCRIPTION	OCC PART #
Category 6 KMJ Jack	<b>KMJA6xx</b>

Replace "xx" with color code, see OCC Jack Color Code Chart for reference.

### PATCH PANELS

DESCRIPTION	OCC PART #
Wall Mount Patch Panel, 568A/B Wired, 12-port, 89D Bracket	<b>PP12SIX</b>
Rack Mount Category 6 Patch Panel, 24-Port, 110-Punch Down	<b>DCC2488/110SIX</b>
Rack Mount Category 6 Patch Panel, 48-Port, 110-Punch Down	<b>DCC4888/110SIX</b>
Rack Mount Patch Panel, 24-port, KMJ Shielded Jacks, 1RU	<b>DCC2488/110SIX-S</b>
Rack Mount Patch Panel, 48-port, KMJ Shielded Jacks, 2RU	<b>DCC4888/110SIX-S</b>
Rack Mount Angled Patch Panel, 568A/B Wired, 24-port, 1RU	<b>ACC2488/110SIX</b>
Rack Mount Angled Patch Panel, 568A/B Wired, 48-port, 2RU	<b>ACC4888/110SIX</b>
1RU Wall Mount Bracket, 1.75"H x 19.69"W x 3.94"D,	<b>WF101</b>
2RU Wall Mount Bracket, 3.50"H x 19.0"W x 5.0"D	<b>WMB3519</b>
Rack Mount Unloaded Panel, KMJ, 24-Port, 1RU	<b>AK24</b>
Rack Mount Field Configurable Patch Panel, KMJ, 48-Port, 2RU	<b>AK48H</b>

### PATCH CORDS

DESCRIPTION	OCC PART #
Category 6 Patch Cord 3ft, with boot	<b>PCSIX03Byy</b>
Category 6 Patch Cord 5ft, with boot	<b>PCSIX05Byy</b>
Category 6 Patch Cord 7ft, with boot	<b>PCSIX07Byy</b>

Replace "yy" with color code, see OCC Patch Cord Color Chart for Reference. Minimum Order Quantities may apply.

## CATEGORY 5E

### PATCH PANELS

DESCRIPTION	OCC PART #
24-Port, Category 5e Patch Panel, 110-Punch Down	<b>DCC2488/110A5E-R</b>
48-Port, Category 5e Patch Panel, 110-Punch Down	<b>DCC4888/110A5E-R</b>

### KMJ JACKS

DESCRIPTION	OCC PART #
Category 5e KMJ Jack	<b>KMJA5EXX</b>

Replace "xx" with color code, see OCC Jack Color Code Chart for reference.

### PATCH CORDS

DESCRIPTION	OCC PART #
Category 5e Patch Cord 3ft, with boot	<b>PC5EB03Byy</b>
Category 5e Patch Cord 5ft, with boot	<b>PC5EB05Byy</b>
Category 5e Patch Cord 7ft, with boot	<b>PC5EB07Byy</b>

Replace "yy" with color code, see OCC Patch Cord Color Chart for Reference. Minimum Order Quantities may apply.



KMJ Category 6 Unshielded Jacks



Call us today to talk about our many cable options. OCC Sales at **800-622-7711** for more information.

SINGLE-MODE

OM1

OM3

OM4

FIBER ENCLOSURES & KITS

COPPER CABLE & CONNECTIVITY

RESI MULTIMEDIA & WORKSTATION

TOOLS

# RESIDENTIAL/MSDE ENCLOSURES & CONNECTIVITY



## MSDE RF TRANSPARENT ENCLOSURES & DISTRIBUTION MODULES PART CONFIGURATOR

MSDExxP	Txxx	Dxx	Vx	L
xx = 15" Enclosure/Door	T = Telco Module	D = Data Module	V = Video Module	L = Lock
xx = 30" Enclosure/Door	T000 = No Telco Module	D00=No Data Module	X = Number of Ports (4 or 6)	Blank = No lock
	<b>408 = 4x8 Telco Module</b>	2nd digit; blank = Cat5e; 6 = Cat6	V0=No Video Module	
		3rd digit = #ports	<b>Ex. V4=4 Port Video Module</b>	
		<b>Ex. D65 = Cat6 5-port module</b>		

**Example: MSDE30PT408D68V6** (30" Enclosure, 4x8 Telco Module, Category 6 8-Port Data Module, 6-Port Video Module)

## MSDE RF TRANSPARENT ENCLOSURES & DISTRIBUTION MODULES

DESCRIPTION	OCC PART #
15" MSDE RF Transparent Enclosure with Hinged Door	<b>MSDE15P</b>
30" MSDE RF Transparent Enclosure with Hinged Door	<b>MSDE30P</b>
CAM Lock with Keys for MSDE RF Transparent Enclosure	<b>MSDEP-LOCK</b>
15" MSDE RF Transparent Enclosure, 6-Pack Bulk	<b>MSDE15P-BOX6</b>
15" MSDE RF Transparent Door, 6-Pack Bulk	<b>MSDE15P-DOOR6</b>
30" MSDE RF Transparent Enclosure, 6-Pack Bulk	<b>MSDE30P-BOX6</b>
30" MSDE RF Transparent Door, 6-Pack Bulk	<b>MSDE30P-DOOR6</b>
Network Equipment Mounting Bracket	<b>MSDEP-NBKT</b>
Unloaded KMJ 12-Port Mounting Bracket	<b>MDDP-12PBKT</b>
Category 6 Data Distribution Module, 4-Port (MSDE RF Transparent)	<b>MDDP6-DB4</b>
Category 6 Data Distribution Module, 6-Port (MSDE RF Transparent)	<b>MDDP6-DB6</b>
Category 6 Data Distribution Module, 8-Port (MSDE RF Transparent)	<b>MDDP6-DB8</b>
Category 5e Data Distribution Module, 4-Port (MSDE RF Transparent)	<b>MDDP-DB4</b>
Category 5e Data Distribution Module, 6-Port (MSDE RF Transparent)	<b>MDDP-DB6</b>
Category 5e Data Distribution Module, 8-Port (MSDE RF Transparent)	<b>MDDP-DB8</b>
RF Video Distribution Module, 1x4, 1GHz (MSDE RF Transparent)	<b>MDDP-V4</b>
RF Video Distribution Module, 1x6, 1GHz (MSDE RF Transparent)	<b>MDDP-V6</b>



KMJ 12-Port Mounting Bracket



30" MSDE RF Transparent Enclosure with Video & Data Modules

## KMJ COMMERCIAL FACEPLATES & SURFACE MOUNT BOXES

DESCRIPTION	OCC PART #
Single Gang Commercial Faceplate, KMJ, 2-Port	<b>FPSK02xx</b>
Single Gang Commercial Faceplate, KMJ, 4-Port	<b>FPSK04xx</b>
Single Gang Commercial Faceplate, KMJ, 6-Port	<b>FPSK06xx</b>
Double Gang Commercial Faceplate, KMJ, 6-Port	<b>DPSK06xx</b>
Single Gang Commercial Faceplate, Angled, KMJ, 1-Port, White	<b>FPSK01A12</b>
Single Gang Commercial Faceplate, Angled, KMJ, 2-Port, White	<b>FPSK02A12</b>
Single Gang Commercial Faceplate, Angled, KMJ, 4-Port, White	<b>FPSK04A12</b>

Replace "xx" with color choice: 00 = Electrical Ivory, 01 = Office White, or 12 = Bright White

SINGLE-MODE

OM1

OM3

OM4

FIBER ENCLOSURES & KITS

COPPER CABLE & CONNECTIVITY

RESI MULTIMEDIA & WORKSTATION

TOOLS



# WORKSTATION



## KMJ STAINLESS STEEL FACEPLATES

DESCRIPTION	OCC PART #
Single Gang Stainless Steel Faceplate, KMJ, 2-Port	<b>FPSK02SS</b>
Single Gang Stainless Steel Faceplate, KMJ, 4-Port	<b>FPSK04SS</b>
Single Gang Stainless Steel Faceplate, KMJ, 6-Port	<b>FPSK06SS</b>

## FURNITURE FACEPLATES

DESCRIPTION	OCC PART #
Furniture Faceplate, KMJ, 3-Port, Black	<b>FAPK302</b>
Furniture Faceplate, KMJ, 4-Port, Black	<b>FAPK402</b>

## SURFACE MOUNT ENCLOSURES

DESCRIPTION	OCC PART #
Surface Mount Enclosure, KMJ, 2-Port	<b>SMEK2XX</b>
Surface Mount Enclosure, KMJ, 4-Port	<b>SMEK4XX</b>
Surface Mount Enclosure, KMJ, 6-Port	<b>SMEK6XX</b>
Fiber Service Outlet Box, 2-Port, KMJ	<b>SMEK2FS012</b>

Replace "xx" with color choice: 00 = Electrical Ivory, 01 = Office White, or 12 = Bright White

## FURNITURE FACE PLATES



FAPK302

FAPK402

## KMJ ADAPTERS

DESCRIPTION	OCC PART #
KMJ Snap-In F Coupler	<b>AKFXX</b>
HDMI In-Line Coupler, Bright White	<b>AKHDMI12</b>
KMJ Snap-In Dual LC Multimode Adapter	<b>AKDLCMXX</b>
KMJ Snap-In SC Multimode Adapter	<b>AKSCMXX</b>
KMJ Snap-In SC/SM APC	<b>AKSCAPCXX</b>
KMJ Snap-In ST Multimode Adapter	<b>AKSTMXX</b>
KMJ 2-Conductor Pass-Thru Adapter	<b>AKDCPT12</b>
KMJ Snap-In Dual LC Single-mode Adapter	<b>AKDLCSEX</b>
KMJ Snap-In SC Single-mode Adapter	<b>AKSCSEX</b>

Replace "xx" with color choice: 00 = Electrical Ivory, 01 = Office White, or 12 = Bright White



KMJ 2-Conductor  
Pass-Thru Adapter

### Easy Ordering and Re-Ordering:

OCC's pre-terminated options allow us to create custom part numbers for your projects that include the cable, enclosures, and connectivity. Protecting your product specification and allowing for easy reordering with our Sales Team.

Learn more at: [hubs.ly/H0z79K70](https://hubs.ly/H0z79K70)



SINGLE-MODE

OM1

OM3

OM4

FIBER ENCLOSURES  
& KITS

COPPER CABLE  
& CONNECTIVITY

RESI MULTIMEDIA  
& WORKSTATION

TOOLS

# TOOLS



## XPRESS ULTRA TERMINATION KIT

DESCRIPTION	OCC PART #
<b>Xpress Ultra™ Fiber Tool Kit</b>	<b>RFCTK</b>
Precision Cleave Tool	RFCLL
Xpress Ultra™ 250µm / 125µm Fiber Stripper	RFCS
HC Fiber Sub Unit stripper, 2.2 mm	FOHC-SLT
HC/HD Cable Fan-out Kit, Buffer Tubing, 12-fiber	HCBK12-24900



## XPRESS ULTRA CLEANING KIT

DESCRIPTION	OCC PART #
<b>Xpress Ultra™ Fiber Cleaning Kit</b>	<b>RFCK</b>
Xpress Ultra™ Lint Free Dry Wipes (Box)	RFCLFDW
Xpress Ultra™ Cleaning Solvent (Spray Bottle)	RFCSOL
Xpress Ultra™ One Click Cleaner 1.25	RFCS1
Xpress Ultra™ One Click Cleaner 2.50	RFCS2
Xpress Ultra™ One Click Replacement Cartridge for 1.25 (LC and MU)	RFRC1
Xpress Ultra™ Replacement Cartridge for 2.50 (SC, FC and ST)	RFRC2
Xpress Ultra™ One Click Cleaner for MPO connectors	RFCSMPO
Xpress Ultra™ Cleaner Mini 1.25	RFCSM1
Xpress Ultra™ Cleaner Mini 2.50	RFCSM2

**Easy Ordering:** The OCC Xpress Ultra™ Termination or Cleaning Kit can be ordered as a full kit or with individual parts.



## KMJ JACK TOOLS

DESCRIPTION	OCC PART #
Parallel Jaw Pliers	FPJP
KMJ Jack Terminator Tool	PA8109



Call us today to talk about our many tool options.  
OCC Sales at **800-622-7711** for more information.

SINGLE-MODE

OM1

OM3

OM4

FIBER ENCLOSURES  
& KITS

COPPER CABLE  
& CONNECTIVITY

RESI MULTIMEDIA  
& WORKSTATION

TOOLS

# OCC ENTERPRISE RESOURCES

## Copper Solutions Product Guide:

[hubs.li/Q01Yq5wn0](https://hubs.li/Q01Yq5wn0)

## Enterprise Solutions Guide:

[hubs.ly/H0tstB00](https://hubs.ly/H0tstB00)

## Industrial Solutions Guide:

[hubs.ly/H0tstDv0](https://hubs.ly/H0tstDv0)

## MDU/Residential Distribution Systems Guide:

[hubs.ly/H0tstGt0](https://hubs.ly/H0tstGt0)

## Passive Optical LAN Solutions Guide:

[hubs.ly/H0tstn30](https://hubs.ly/H0tstn30)

## Passive Optical LAN Quick Order Guide:

[hubs.ly/H0x4MH50](https://hubs.ly/H0x4MH50)

## Senior Living Solutions Guide:

[hubs.ly/H0tstKz0](https://hubs.ly/H0tstKz0)

## Fiber Splice Cassette Specification Sheet:

[hubs.ly/H0x-Nln0](https://hubs.ly/H0x-Nln0)



## WARRANTY & ASSURANCE

### WARRANTIES

At OCC, we understand reliability is critical to your business. The demands of modern industry require datacomm components that provide both flawless performance and exceptional integrity. We're committed to providing cabling and connectivity solutions that exceed industry standards. Then you can be certain you are getting components that are fully warranted by OCC, according to each applicable warranty statement. Learn more [occfiber.com/performance-warranties](https://occfiber.com/performance-warranties)

### MDIS PROGRAM

OCC's Multimedia Design and Integration Specialist (MDIS) Program is designed to serve as a guarantee that our quality products are being installed to our extremely rigorous installation standards. This means the installer can rely on technical assistance, specification support and various resources for any application or project using OCC cable and connectivity products. Learn more about the MDIS 25 Year System Warranty: [occfiber.com/25-year-warranty](https://occfiber.com/25-year-warranty)

### QUALITY ASSURANCE

Our Quality Management System is certified to ISO 9001:2015, the internationally recognized standard for quality management systems. This means that each customer will receive the highest quality standard on each and every product. OCC conducts rigorous inspections to ensure the quality and reliability of all our products. This includes extensive environmental and mechanical testing on each product type to verify compliance on a continuing basis. In addition, many independent testing and verification laboratories continue to confirm our compliance to UL, MSHA, and other applicable product standards. **Rest assured, our quality is sound.**



FIBER



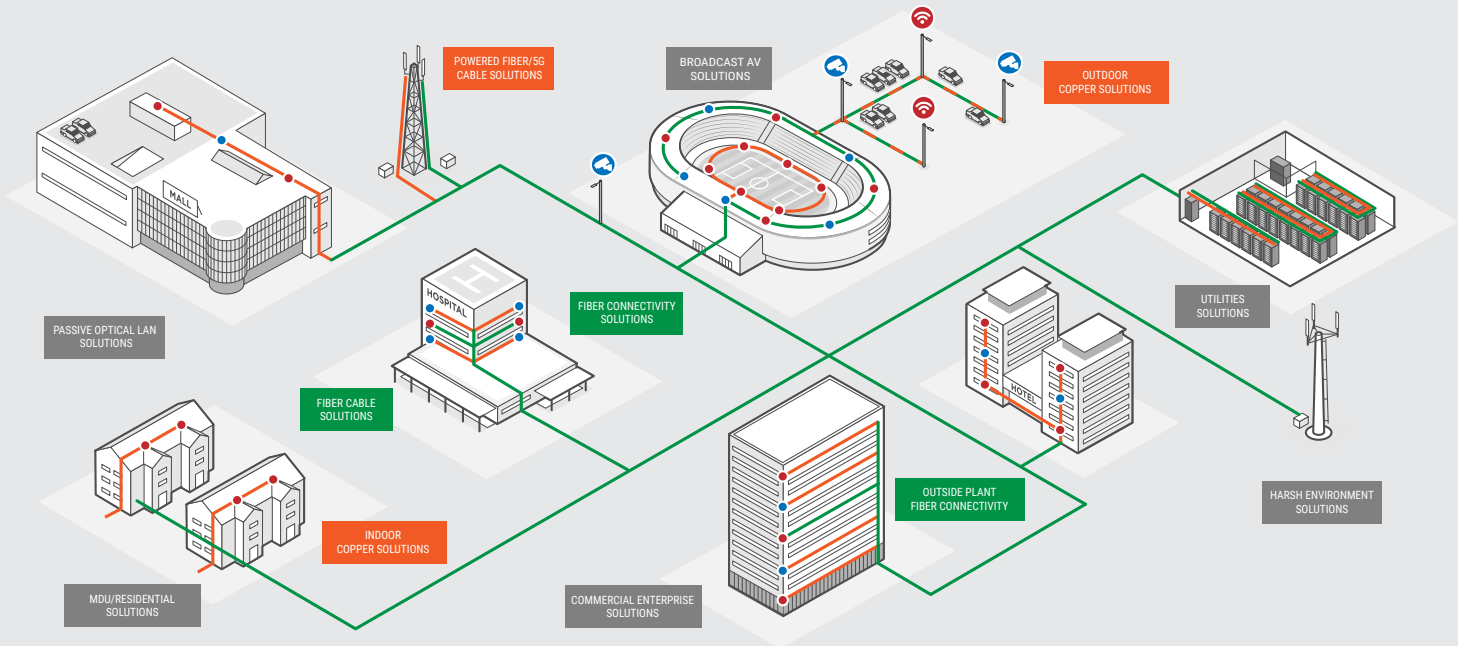
COPPER



WIRELESS



SECURITY



### OCC ROANOKE, VA

Corporate Headquarters and Fiber Optic Cable Manufacturing Facility  
5290 Concourse Drive  
Roanoke, VA 24019 USA  
**540.265.0690 or 800.622.7711**

### OCC ASHEVILLE, NC

Enterprise Connectivity Manufacturing Facility  
33 Superior Way  
Swannanoa, NC 28778 USA  
**828.298.2260 or 800.622.7711**

### OCC DALLAS, TX

Harsh Environment and Specialty Connectivity Manufacturing Facility  
1700 Capital Avenue, Suite 150  
Plano, TX 75074 USA  
**972.509.1500 or 877.509.1500**

**VISIT US AT  
OCCFIBER.COM**

**CONTACT US AT  
INFO@OCCFIBER.COM**



Like us on Facebook:  
[facebook.com/occsolutions](https://facebook.com/occsolutions)



Follow us on Twitter:  
[twitter.com/occsolutions](https://twitter.com/occsolutions)



Watch us on YouTube:  
[youtube.com/user/occsolutions](https://youtube.com/user/occsolutions)



Follow us on LinkedIn:  
[linkedin.com/company/optical-cable-corporation](https://linkedin.com/company/optical-cable-corporation)



Follow us on Instagram:  
[instagram.com/OpticalCableCporation](https://instagram.com/OpticalCableCporation)