



### Overview

OCC's Procyon Blade is the newest addition to the Procyon product family of high-density network solutions. Designed to provide superior organization, accessibility, and density, the Blade system enclosures and in-line splice modules maintain the highest optical performance over the longest runs, making it ideal for multiple building network configurations. This reliable and reconfigurable system is inherently suited for multi-building complexes such as hospitals, corporate centers, government facilities and universities and supports the increasing growth for future applications.



### Features & Benefits

- **Maintains superior connections for inter- and intra-building cable runs.** OCC's Procyon Blade connectivity and cabling system is based around a splicing-centric installation architecture. By decreasing the number of physical connections, the Blade solution minimizes signal loss typically associated with multiple terminations and improves signal integrity with reduced back reflection. This makes the system well suited to longer runs, such as between buildings on a campus.
- **Simple access for easy installations.** Blade enclosures are designed for easy access to subgroup cables with Blade in-line splice modules. OCC's patent-pending in-line splice modules have "blade-like" attributes that allow them to be accessed from either the front or rear of the enclosure. This unique feature minimizes the risk of disturbing co-located, adjacent subgroups and makes moves, adds and changes much simpler. Dedicated slack storage and splicing for each subgroup cable eliminates the inherent tangle and disorder associated with conventional transition and splice tray installations.
- **Versatile configurations for maximum density.** The Blade enclosures are available in three rack mount versions (2RU, 3RU, and 4RU) and two wall mount options, as well as a variety of adapter plate options. By utilizing any Blade enclosure with its revolutionary in-line splice modules, providing high-density connections is only multiplied by the variety of ways you can configure them.
- **A singular source for a full solution.** Combined with OCC's HC- and HD-Series cables, the Blade solution can provide a complete connectivity and cabling infrastructure for campus and multi-building networks. The Blade enclosures are designed to service 12-fiber subgroup trunk cables such as the OCC HC- and HD-Series cables. HC-Series cables have an outer diameter much smaller than conventional cables and have exceptional mechanical and environmental performance while maintaining a high-duct efficiency, ideal for long inter-building runs. HD-Series cables are lightweight and are exceptional in tight bends, perfect for trunk, LAN or data center applications. Together with OCC's Blade enclosures and in-line splice modules, this full solution provides a single source for an organized, accessible and dense network system.

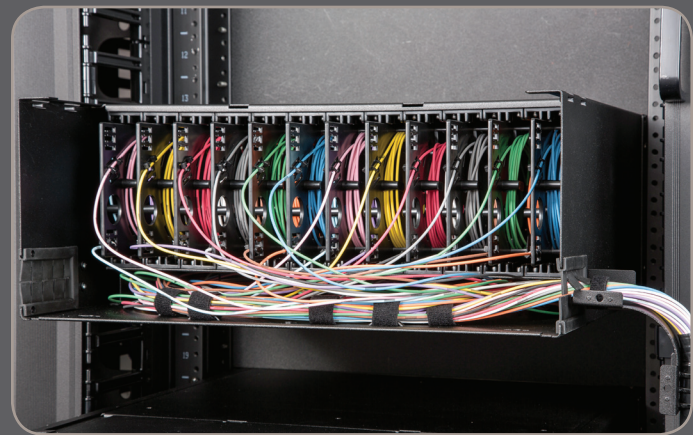
### Applications

- Healthcare and Hospitals
- Colleges and Universities
- Data Center and Processing Networks
- Corporate Campuses
- Any high-density splicing application

**Better signal strength, improved reliability and ease of service**

## Blade Rack Mount Enclosures

- Available in 2RU, 3RU and 4RU sizes to accommodate various fiber counts.
- Internal rails securely hold the Blade In-line Splice Modules in place for normal use and allow them to be accessed easily from either the front or rear of the enclosure.
- All enclosures include storage space for slack cables.
- Lockable rear compartment option for security is available.
- External strain relief brackets that reduce fiber stress are available to secure cables upon entry and exit to the enclosure and provide support for proper cable bends and efficient cable management.
- All enclosures include a transparent cover that provides visual inspection of ports and a defined labeling field for TIA 606A compliance.
- Hardware included for 19" or 23" mounting.
- Fabricated from 16 gauge steel to withstand environmental challenges for years of adds, moves, and changes.



## Ordering Information

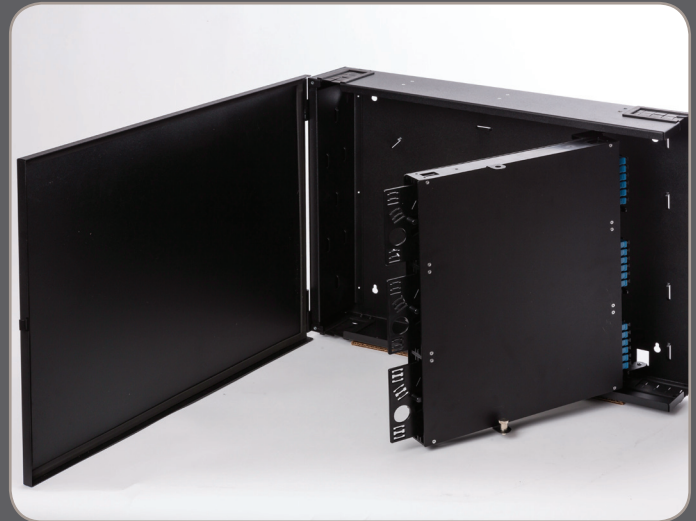
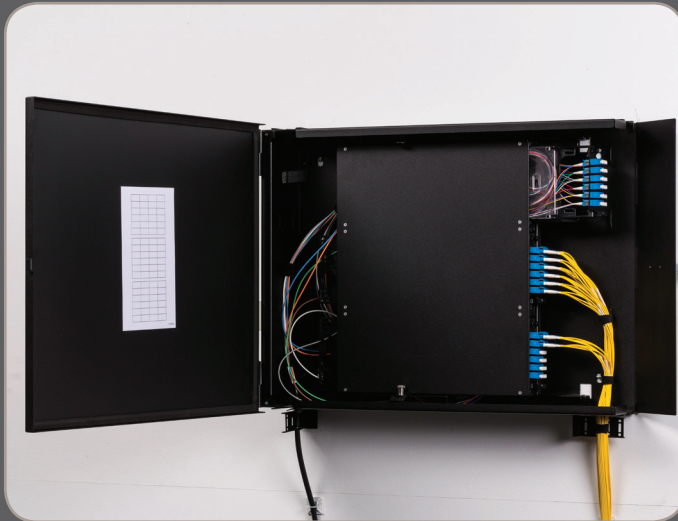
PART NUMBER	DESCRIPTION
PRORTC2U-3ISM	Rack mount enclosure, 2RU, accommodates 3 in-line splice modules (36 SC ports or 72 LC ports max)
PRORTC3U-6ISM	Rack mount enclosure, 3RU, accommodates 6 in-line splice modules (72 SC ports or 144 LC ports max)
PRORTC4U-12ISM	Rack mount enclosure, 4RU, accommodates 12 in-line splice modules (144 SC ports or 288 LC ports max)
FOCBKTB	Strain relief bracket
FOCBKTV	Vertical strain relief bracket

Better signal strength, improved reliability and ease of service



## Blade Wall Mount Enclosures

- Available in 2 sizes to accommodate various fiber counts.
- Internal rails securely hold the Blade In-line Splice Modules in place for normal use and allow them to be accessed easily from within the enclosure's inner compartment.
- Pivoting inner compartment allows easy access to in-line splice modules and provides storage for slack cables underneath.
- External strain relief brackets that reduce fiber stress are available to secure cables upon entry and exit to the enclosure and provide support for proper cable bends and efficient cable management.
- Numerous internal locations for securing slack cable.
- Defined labeling field for TIA 606A compliance included.
- Fabricated from 16 gauge steel to withstand environmental challenges for years of adds, moves, and changes.



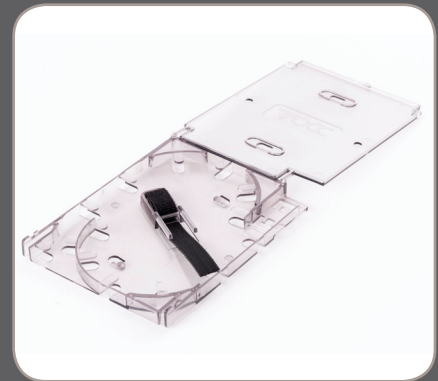
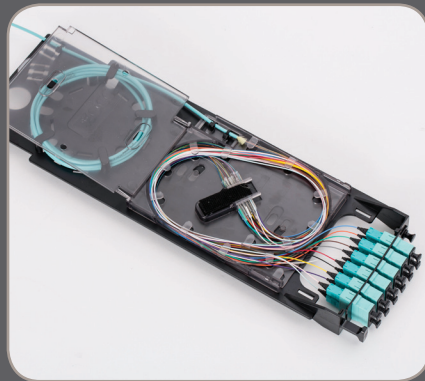
## Ordering Information

PART NUMBER	DESCRIPTION
PROWTC-2ISM	Wall mount enclosure, 13.6"H x 24.6"W x 4.3"D, accommodates 2 in-line splice modules (24 SC ports or 48 LC ports max)
PROWTC-3ISM	Wall mount enclosure, 18.6"H x 24.6"W x 4.3"D, accommodates 3 in-line splice modules (36 SC ports or 72 LC ports max)
FOCBKTB	Strain relief bracket
FOCBKTV	Vertical strain relief bracket

**Better signal strength, improved reliability and ease of service**

## Blade In-line Splice Modules

- Designed to service (1)12-fiber subgroup cable per side.
- Each in-line splice module includes splice tray(s) and populated adapter plate as ordered.
- Each in-line splice module includes a slack storage area capable of storing several meters of slack subgroup cable.
- Splice trays include a patented “quick strap” splice protection sleeve holder designed for higher density and quicker installations.
- Clear tray covers allow for quick and easy visual inspection of fiber optic splices.
- Blue felt adhesive strips, Velcro strips and cable ties are included for securing fibers and cable.
- In-line splice modules may be pre-loaded with pigtails. Contact OCC for ordering information.



## Ordering Information

PART NUMBER	DESCRIPTION
PROISM12MMSC*	In-line splice module, (1) splice tray, 12-port, multimode dual SC adapter plate included
PROISM12MSC*	In-line splice module, (1) splice tray, 12-port, single-mode dual SC adapter plate included
PROISM125GSC*	In-line splice module, (1) splice tray, 12-port, multimode OM3 dual SC adapter plate included
PROISM125QSC*	In-line splice module, (1) splice tray, 12-port, multimode OM4 dual SC adapter plate included
PROISM12APSC*	In-line splice module, (1) splice tray, 12-port, single-mode dual SC angle polish adapter plate included
PROISM24MMLC*	In-line splice module, (2) splice trays, 24-port, multimode quad LC adapter plate included
PROISM24SMLC*	In-line splice module, (2) splice trays, 24-port, single-mode quad LC adapter plate included
PROISM245GLC*	In-line splice module, (2) splice trays, 24-port, multimode OM3 quad LC adapter plate included
PROISM245QLC*	In-line splice module, (2) splice trays, 24-port, multimode OM4 quad LC adapter plate included
PROISM24APLC*	In-line splice module, (2) splice trays, 24-port, single-mode quad LC angle polish adapter plate included
PROISMTRAY	Single splice tray for 12 fiber splices (1 subgroup cable)

\* Insert “P” at the end of the part number to order pre-loaded with pigtails.